

TRICAM® SL II

Three-Chip Camera System, Color Systems PAL/NTSC,
Digital Imaging Processor

STORZ
KARL STORZ — ENDOSKOPE

TRICAM® SL II is the endoscopic video platform offered by KARL STORZ for all endoscopically-assisted applications and video display of the highest image quality.

Thanks to its ergonomic, compact design, this CCD sensor technology separates the optical image of the 3-CCD image sensor into the three primary colors by means of a specially coated color prism.

Each individual CCD sensor receives a specific color with the maximum line representation.

The separate processing of the primary color information red, green, and blue means that all colors can be optimally captured with this process. Furthermore, the use of all three CCD sensors offers up to three times more detail enhancement.

Special Features:

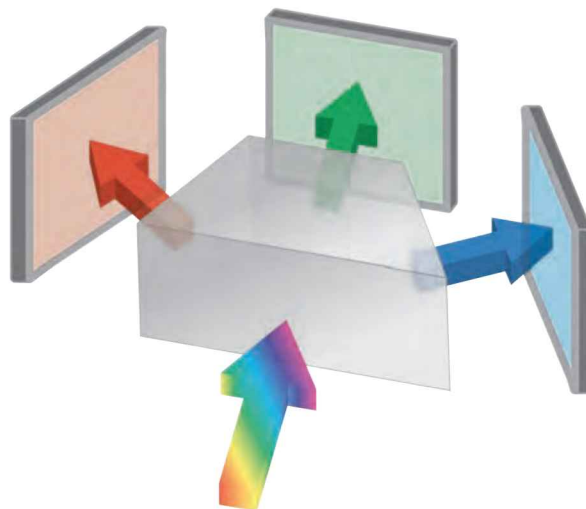
- **Best image quality and display due to 3-CCD sensor chip technology**
- **Enhanced signal quality through Digital Signal Processing (contrast and filter enhancement for rigid, semirigid and flexible endoscopes)**
- **Optimal image size display, regardless of the telescope used, thanks to patented Parfocal Optical Zoom Lens**
- **Simplified operation reduces camera movement to, e.g., prevent damage to or soiling of the lens**
- **Consistent illumination due to the auto-exposure system ensures seamless transitions between images, regardless of imaging area or available light**
- **Functionality at the touch of a button with easy-to-program operating elements via intuitive control of all functions in the sterile area**
- **Parameters of the OR equipment used, light sources, etc. can be displayed and controlled (KARL STORZ Communication Bus) on the monitor**
- **Digital video output (DV) for digital recording**
- **Digital zoom 1 – 2x can be adjusted to 4 levels**
- **“Freeze Frame” function can be activated via camera head buttons or an external footswitch**
- **Fluorescence imaging mode available**

TRICAM® SL II offers a high degree of optoelectronic accuracy and precision.

Signals are processed by means of a digital image processor. The endoscopic image is produced true to the original image. The image processor also assumes automatic image optimization during continuously changing illumination and color conditions. Manual adjustment is therefore no longer necessary.

The user has several pre-assigned digital-optimization-filters at his disposal for adjustment to rigid, semi-rigid and flexible endoscopes at the touch of a button.

Video outputs such as Digital-Video (DV) and all analog signal variations are an integral feature of **TRICAM® SL II** standard equipment.



TRICAM® SL II

Camera Control Unit SCB



20 2230 11U1 TRICAM® SL II Camera Control Unit SCB

color systems **PAL/NTSC**, with **KARL STORZ-SCB** and integrated digital Image Processing Module, power supply 100 – 240 VAC, 50/60 Hz

including:

Mains Cord

Keyboard, with US English character set

2x **Connecting Cable**, for controlling peripheral units

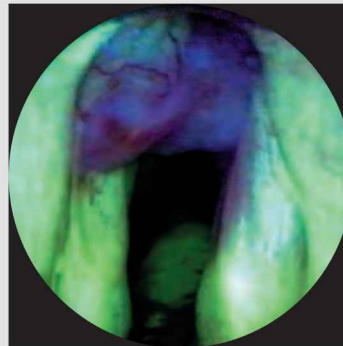
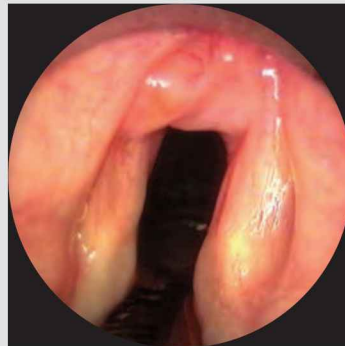
BNC/BNC Video Cable

S-Video (Y/C) Connecting Cable

Special RGBS Connecting Cable

SCB Connecting Cable

DV Connecting Cable, 6 pin to 4 pin



Photodynamic Diagnosis (PDD) with D-LIGHT light sources, left: white light, right: blue light

Specifications:

Video output	- RGBS signal to 4x BNC sockets - S-Video signal to 4-pin Mini-DIN socket (2x) - Composite signal to BNC socket - DV signal to 6-pin DV socket	Camera Control Unit (CCU)	dimensions: 305 x 88 x 254 mm (w x h x d)
Input	keyboard input for character generator and control functions, 6-pin Mini-DIN socket	Weight	2.7 kg
Control out/input	KARL STORZ-SCB to 6 pin Mini-DIN socket (2x), 3.5 mm stereo jack plug (ACC 1, ACC 2)	Power supply	100-240 VAC, 50/60 Hz
		Certified to	IEC 601-1, 601-2-18, CSA 22.2 No. 601, UL 2601, and CE acc. to MDD, protection class 1/BF

Further accessories for TRICAM® SL II see page TP 34

Component Parts see COMPONENTS, SPARE PARTS