

**OLYMPUS**<sup>®</sup>

Your Vision, Our Future

EVIS  
**EXERA II**

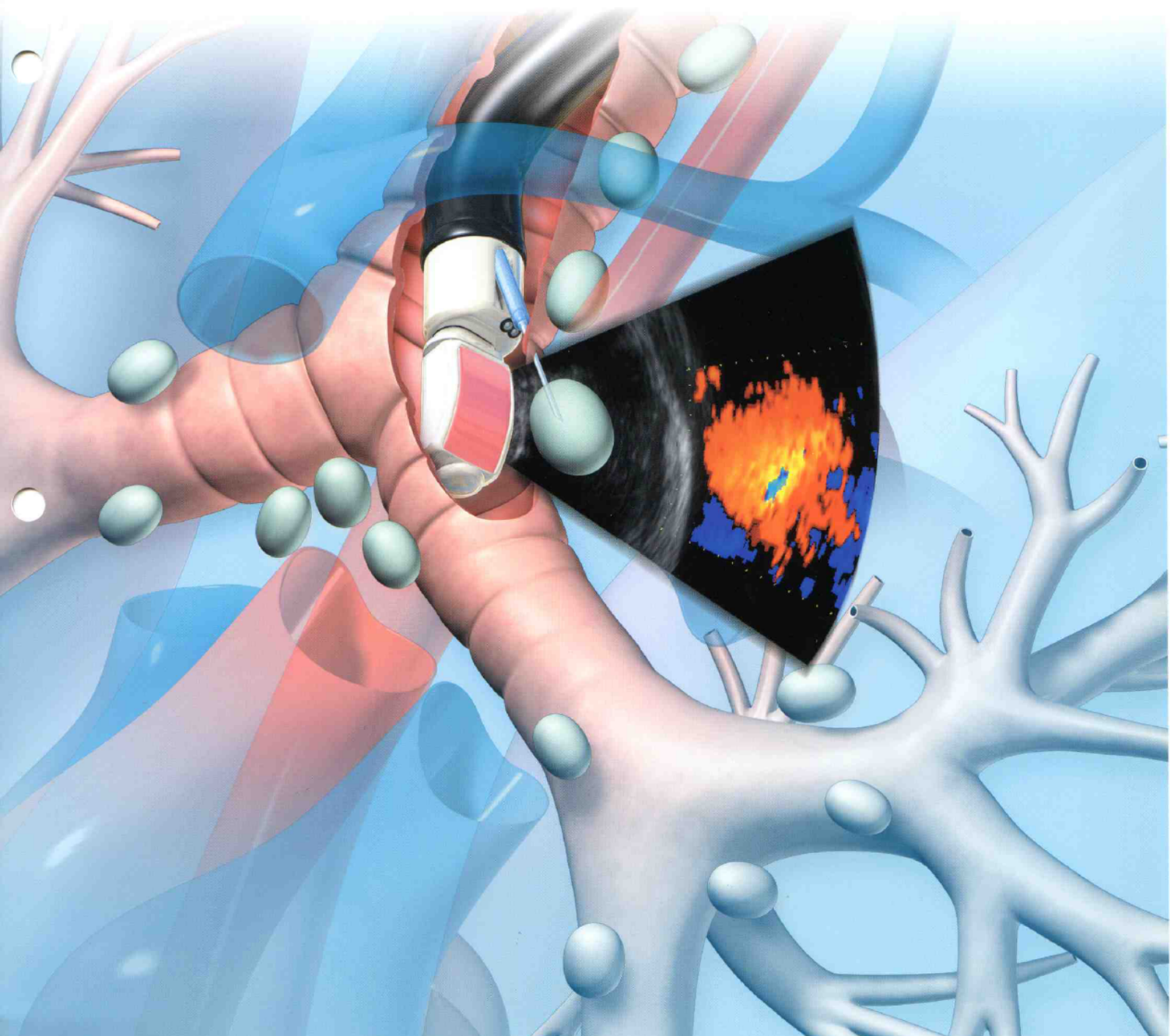
EVIS EXERA II ULTRASONIC BRONCHOFIBERVIDEOSCOPE

OLYMPUS **BF** TYPE **UC180F**



**EBUS-TBNA**

Setting a new standard for diagnosis and staging in the lung

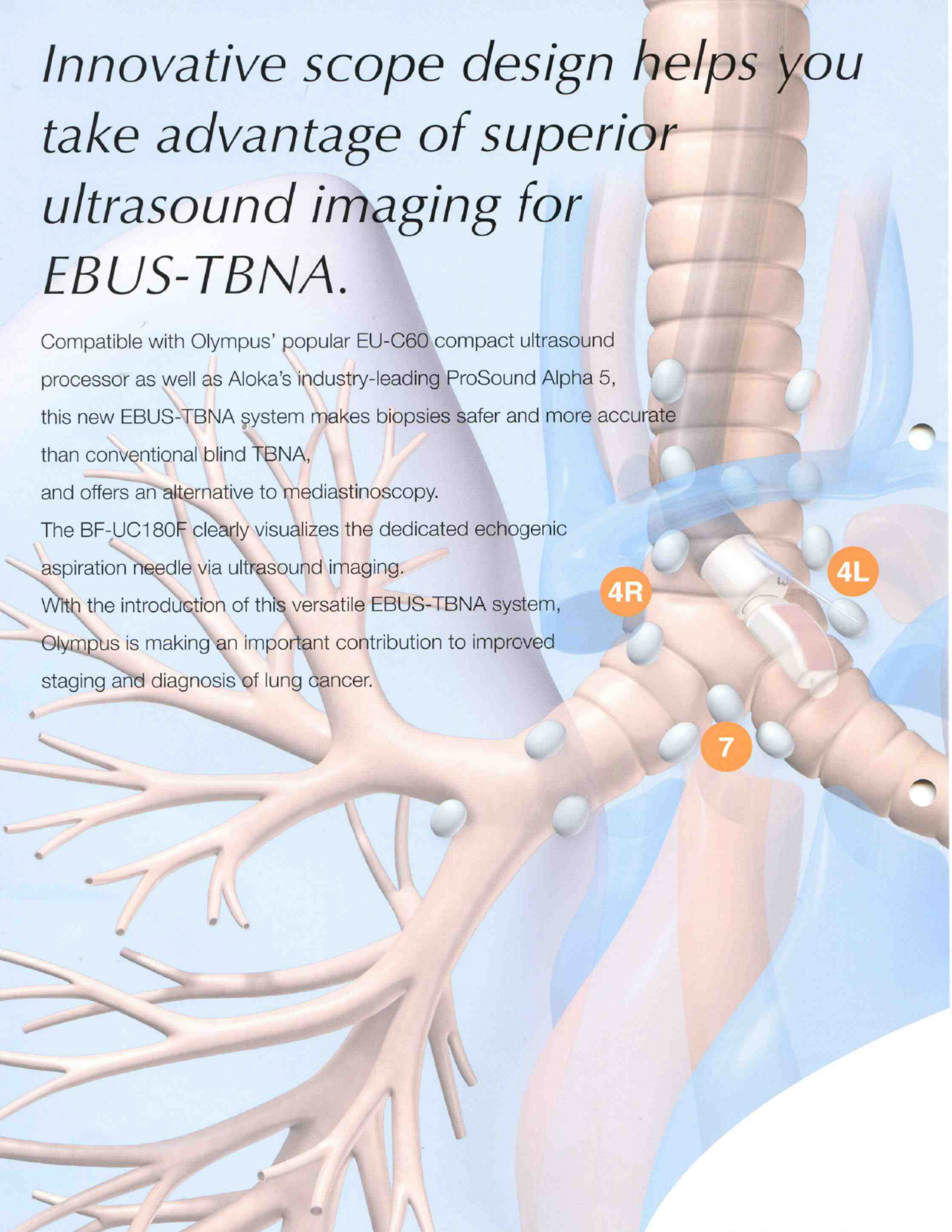


# *Innovative scope design helps you take advantage of superior ultrasound imaging for EBUS-TBNA.*

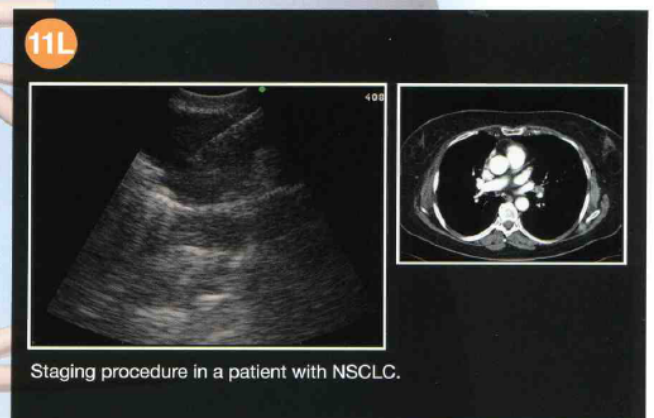
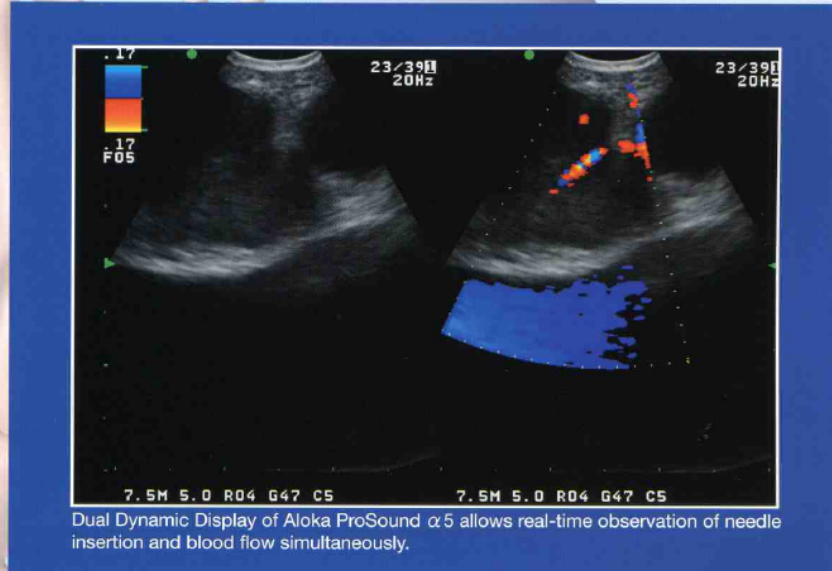
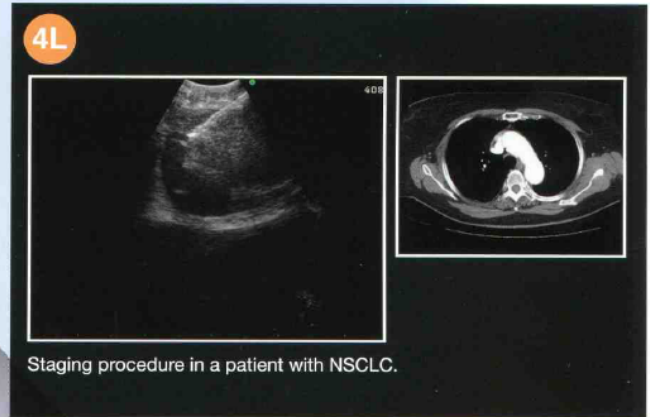
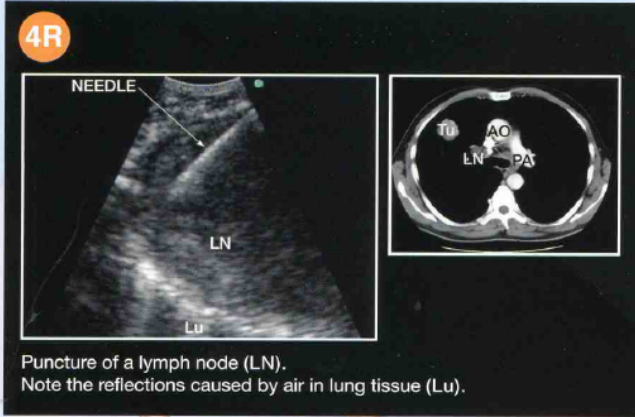
Compatible with Olympus' popular EU-C60 compact ultrasound processor as well as Aloka's industry-leading ProSound Alpha 5, this new EBUS-TBNA system makes biopsies safer and more accurate than conventional blind TBNA, and offers an alternative to mediastinoscopy.

The BF-UC180F clearly visualizes the dedicated echogenic aspiration needle via ultrasound imaging.

With the introduction of this versatile EBUS-TBNA system, Olympus is making an important contribution to improved staging and diagnosis of lung cancer.



# Clinical cases



# Wide 2.2 mm diameter channel and innovative detachable ultrasound cable

## Features

- Channel diameter enlarged to 2.2 mm for improved suction capability and device insertion.
- Convenient new scope design with detachable ultrasound cable makes it possible to use the same scope with either Olympus EU-C60 or Aloka ProSound  $\alpha$ 5. Just connect the cable to the system you want to use.
- Wider scanning and higher resolution image, plus higher sensitivity Doppler function available with ProSound  $\alpha$ 5.
- Detachable cable simplifies cleaning and facilitates easier placement into an automatic endoscope reprocessor.
- Innovative "hybrid" design combines video and fiberoptic technologies in a single scope, offering the same functionality as videoscopes yet with a slim insertion tube diameter of only 6.3 mm\*, even with an incorporated ultrasound transducer.

\*Distal tip diameter measures 6.9 mm.

11L

EVIS EXERAII ULTRASONIC BRONCHOFIBERVIDEOSCOPE

OLYMPUS **BF** TYPE **UC180F**

HYBRID  
SCOPE

Now a choice of two high-performance ultrasound processors



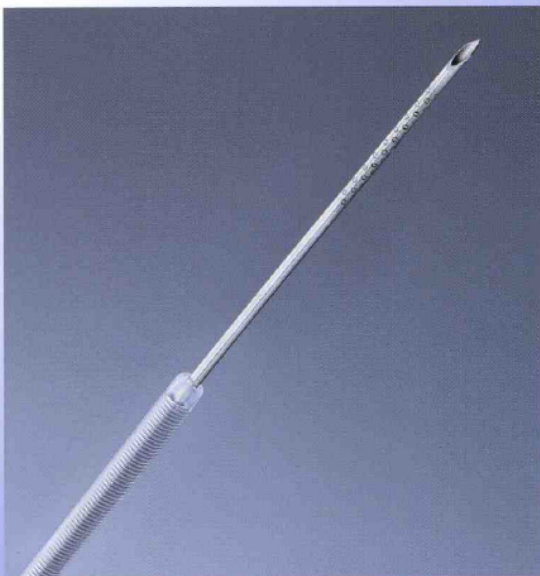
**ALOKA DIAGNOSTIC  
ULTRASOUND SYSTEM  
ProSound  $\alpha$ 5**

- Higher resolution and wider 60-degree scanned image
- Quad frequency imaging
- Tissue Harmonic Echo
- Higher sensitivity Color and Power Doppler
- Dual Dynamic Display
- DICOM compatible digital data output



**EUS EXERA COMPACT ENDOSCOPIC  
ULTRASOUND CENTER  
EU-C60**

- Compact and easy-to-use
- Color Power Doppler
- Switch between ultrasound and endoscopic images on the same monitor



**SINGLE USE ASPIRATION NEEDLE  
NA-201SX-4022**

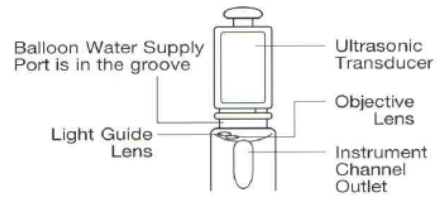
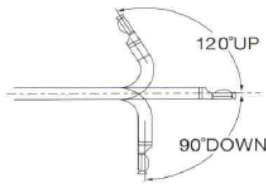
Echogenic dimpled needle tip for improved visibility on ultrasound images



**Features**

- Specifically designed for use with EBUS-TBNA scopes
- 22-gauge outer diameter
- Adjustable needle length
- Pre-sterilized and single-use

**ViziShot**

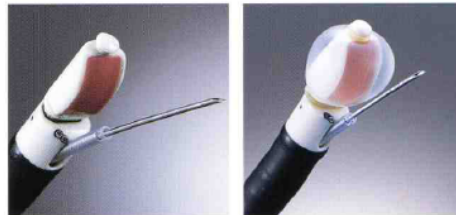


### BF-UC180F Specifications

Model		BF-UC180F	
Endoscopic functions	Optical system	Field of view	80 degree
		Direction of view	35 degree forward oblique
		Depth of field	2 to 50 mm
	Insertion tube	Distal end outer diameter	6.9 mm
		Insertion tube outer diameter	6.3 mm
		Working length	600 mm
	Instrument channel	Channel inner diameter	2.2 mm
		Direction from which Endo-Therapy accessories enter and exit the endoscopic image	
	Bending section	Angulation range	UP 120, Down 90
	Total length		890 mm
		<b>With ALOKA ProSound α5</b>	<b>With OLYMPUS EU-C60</b>
Ultrasonic functions	Ultrasonic cable	MAJ-1597 (1,500 mm)	MAJ-1722 (1,200 mm)
	Display mode	B-mode, M-mode, D-mode, Flow-mode, Powerflow-mode	B-mode, Color Power Doppler mode
	Scanning method	Electronic curved linear array	
	Scanning direction	Parallel to the insertion direction	
	Frequency	5 / 7.5 / 10 / 12 MHz	7.5 MHz
	Tissue Harmonic Fcho	5.0P / 6.0S / 6.0R / 7.5H	N/A
	Scanning range	60 degree	50 degree
	Focusing Point	A maximum of 4 focusing points are available.	Fixed
	Contacting method	Balloon method, Direct contacting method	

### NA-201SX-4022 Specifications

Model	NA-201SX-4022
Maximum Insertion Portion Diameter	1.8 mm
Working Length	700 mm
Needle Width	22 G
Needle Length	40 mm



Any product in our brochures that features this is part of the lineup of Olympus fine-needle aspiration biopsy product.

Specifications, design and accessories are subject to change without any notice or obligation on the part of the manufacturer.

**OLYMPUS**

OLYMPUS MEDICAL SYSTEMS CORP.  
Shinjuku Monolith, 3-1 Nishi-Shinjuku 2-chome, Shinjuku-ku, Tokyo 163-0914, Japan  
OLYMPUS MEDICAL SYSTEMS EUROPA GMBH  
Postfach 10 49 08, 20034 Hamburg / Wendenstrasse 14-16, 20037 Hamburg, Germany  
OLYMPUS AMERICA INC.  
3500 Corporate Parkway, P.O. Box 610, Center Valley, PA 18034-0610, U.S.A.  
OLYMPUS SURGICAL & INDUSTRIAL AMERICA INC.  
One Corporate Drive, Orangeburg, New York 10962, U.S.A.  
OLYMPUS LATIN AMERICA, INC.  
5301 Blue Lagoon Drive, Suite 290 Miami, Florida 33149-2097, U.S.A.  
OLYMPUS KEYMED GROUP LTD.  
Keymed House, Stock Road, Southend-on-Sea, Essex SS2 5QH, England

OLYMPUS SINGAPORE PTE LTD.  
491B River Valley Road #12-01/04 Valley Point Office Tower, Singapore 248373  
OLYMPUS HONG KONG AND CHINA LIMITED  
L43, Office Tower, Langham Place, 8 Argyle Street, Mongkok, Kowloon, Hong Kong  
OLYMPUS (BEIJING) SALES & SERVICE CO., LTD.  
Room.1202, NCI Tower, A12 Jianguomenwai Avenue Chaoyang District Beijing, 100022, China  
OLYMPUS MOSCOW LIMITED LIABILITY COMPANY  
117671, Moscow, Mikaya Kaluzhskaya 19, bld. 1, fl.2, Russia  
OLYMPUS AUSTRALIA PTY LTD  
31 Silby Road, Mount Waverley, VIC. 3148, Australia  
OLYMPUS KOREA CO., LTD.  
4F, 3F, Gyeongnam Bldg., 157-27, Samsong-dong, Gangnam-ku, Seoul, Korea

www.olympus.com