

Company Profile

Since the establishment, SonoScape has committed to provide high standard medical equipments for healthcare of human beings. SonoScape specializes in the development and production of diagnostic ultrasound solutions. By introducing advanced imaging techniques, SonoScape's products have improved diagnostic accuracy and therefore enabled better health outcomes. Since 2002, SonoScape's products have reached and benefited millions of people from over 100 countries. With the world in mind, SonoScape will continue providing more effective and accessible healthcare solutions, through persistent innovation and passion for life.

Quote from the analyst of FROST & SULLIVAN

"SonoScape Co. Ltd. has exhibited exceptional entrepreneurial capabilities ... The company's priority in maintaining high levels of quality in its product lines is well supported by the negligible after-sales costs associated with its ultrasound systems. Also with the launch of SSI-1000, the hand carried ultrasound with multiple clinical applications; SonoScape has made significant strides towards establishing itself as a global medical equipment manufacturer."

Mr. Krishanu Bhattacharjee

Company Milestone

- 2002: Company Founded in Shenzhen, China
- 2003: Released SSI-1000: the 1st 15" Portable Color Doppler system in China
- 2004: Released SSI-2000: the 1st PC platform Color Doppler system in China
- 2005: Received the "High Technology Company" award from the government
- 2007: Received "CHINA TOP BRAND" in the Medical Equipment Industry
- 2007: Released the 1st Real time 4D ultrasound system in China
- 2008: Received "European Entrepreneurial Company 2008" from FROST & SULLIVAN
- 2008: Received "Flagship Company" in the Medical Equipment industry in China
- 2009: Received "Product Quality Leadership Award 2009" from FROST & SULLIVAN in London, UK
- 2011: Received the Reddot Product Design Award for S20 in Essen, Germany



SonoScape Co., Ltd.

Yizhe Building, Yuquan Road, Shenzhen, 518051, China

Tel: +86-755-26722890 Fax: +86-755-26722850 E-mail: market@sonoscape.net

www.sonoscape.com



S2

Smart Color System,
Discovering Your Outstanding Value



S2

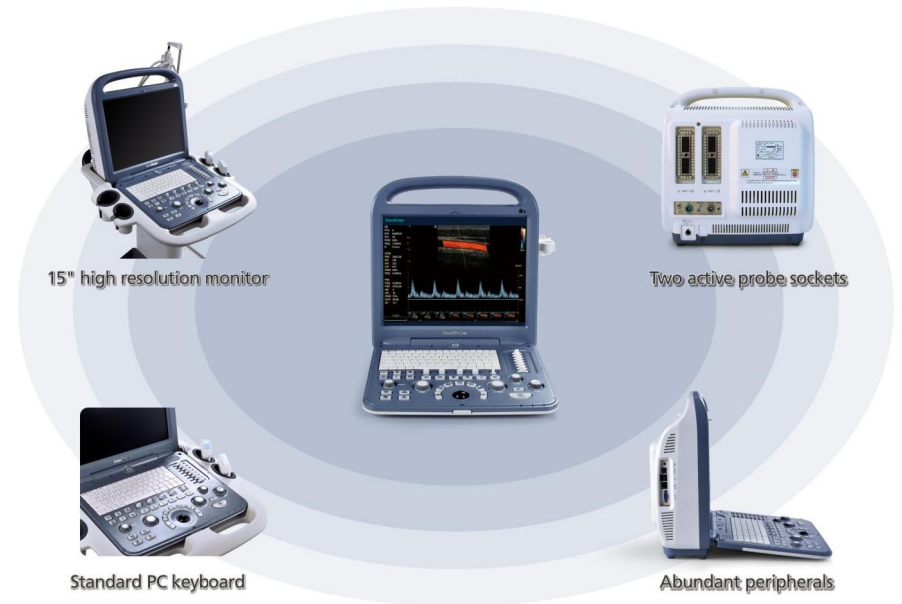
Smart Color System,
Discovering Your
Outstanding Value

The new SonoScape portable color system S2, with practical design and stable performance, will go beyond your expectation but not your budget.

S2 is catered to the needs of doctors: intelligent patient file management system, convenient user-definable settings, professional diagnosis applications. Working with S2, you can have comfort, accuracy and confidence.

Ergonomic Design

Portable design, be ready at anytime and anywhere.



Comprehensive Functions

Complete working modes, outstanding 2D performance, sensitive blood flow imaging, 4D image technology, endows S2 with the best package of functions in its class.

Complete Working Modes

- B Mode, Dual B, 4B
- M Mode, Color M, Steer M,
- Color Mode, DPI Mode
- PW Mode, CW Mode (optional)

Advanced Imaging Technology

- THI
- μ -Scan Speckle Reduction (optional)
- Compound Imaging (optional)
- Panoramic Imaging (optional)
- Trapezoid Imaging (optional)
- 4D imaging (optional)

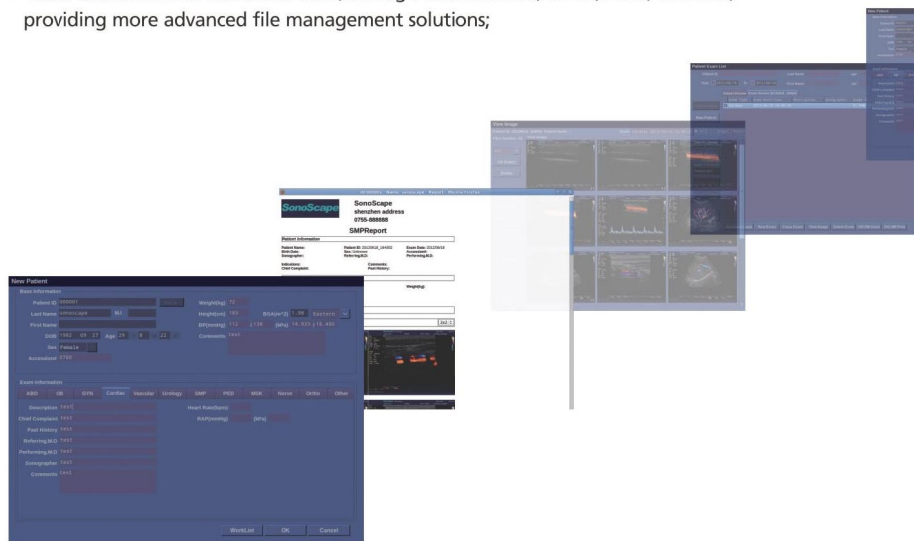
Broad Range of Clinical Application

- General Practice: Abdominal, OB, GYN, Vascular, Urology, Small Parts
- Post-measurement and calculations software packages
- Professional report for different exams

Optimum Workflow

Upgraded workflow, smart data management, a more user-friendly and productive Color Doppler system.

- **Intuitive user interface:** Clear system layout designed for convenient workflow, Menu-driven interface;
- **Define your own work-style:** Fully customized work settings for data table/graph, function keys, icons, formulas, measurement, report layout...totally based on your own work style and habit;
- **Clip-board function:** Easy image review during scanning;
- **Smart patient data management:** Easy access to patient image and data storage, retrieve, review and report;
- **Value-added DICOM functions:** Save, Storage Commitment, MPPS, Print, Worklist; providing more advanced file management solutions;



- **Various data solutions:** built-in 160G hard drive, DICOM 3.0 LAN port, VGA port, support Flash disk, External hard drive, external CD drive, video printer, USB laser/jet printer and so on;
- **M-tuning:** Intelligent one key image optimization.



Connecting

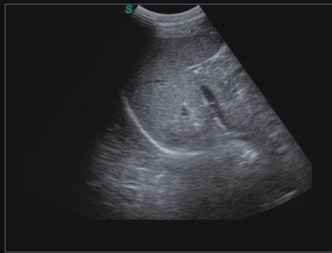
Superior Imaging Quality



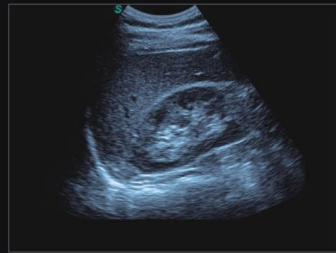
Gallbladder



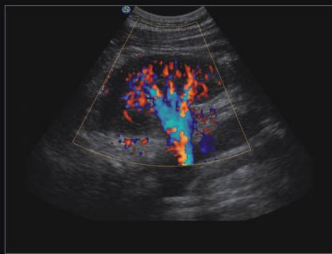
Hepatic Blood Flow



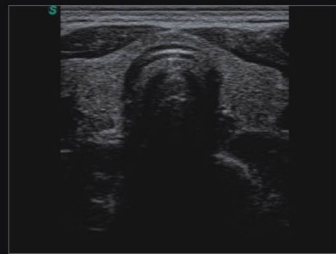
Spleen



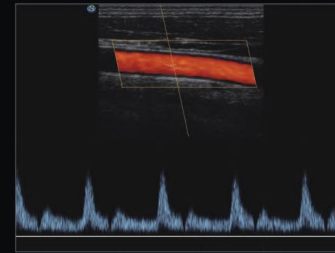
Liver and Kidney



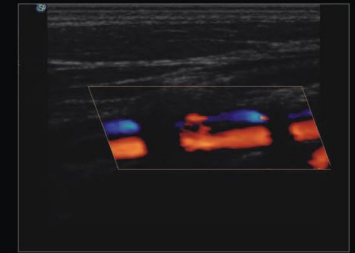
Renal Blood Flow



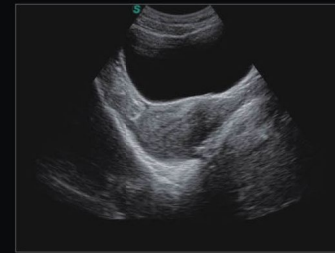
Thyroid



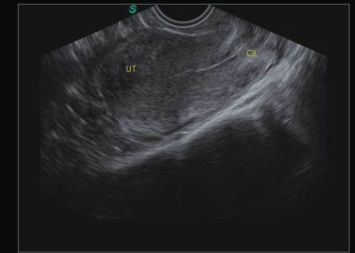
Spectral of Carotid Blood Flow



Vertebral Artery



Uterus



Uterus



Fetus



4D