

# ECS10

## QUATERNARY GRADIENT PREPARATIVE SYSTEM

High effective preparative system containing **UV-VIS DAD detector**, **preparative pump** and **gradient box**. Detector allows measuring at four wavelengths in the same time or an informative scan.

Communication of all units is through **RS232** or **Ethernet(LAN)**. Additional PC A/D converter card is not required for this system.



System contains manual injector and **ECOMAC** software which include drivers for all ECOM units.

### MAIN PARTS

#### FLASH 14 DAD 600 DETECTOR

is an UV-VIS diode array detector, which allows measuring absorbance of **four wavelengths in range of 200 – 600 nm simultaneously in one cell** just as visualization of whole spectra. It is possible to use the detector in **flash and preparative** applications. Standardly is assembled preparative cell PLCC 15 but other cells are available.



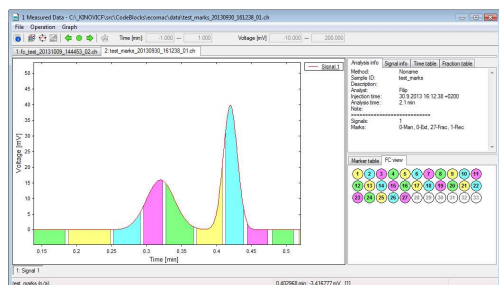
#### ECP2100 PREPARATIVE PUMP

This isocratic pump works with Gradient Box ECB2007 as a **quaternary gradient pump**. Flow rate range is **1-100 ml/min** and pressure limit at **15 MPa**. Unit software includes new learning algorithm for pulsation suppression and many testing and diagnostic functions.



#### ECOMAC CHROMATOGRAPHY SOFTWARE

This system is fully controlled by ECOMAC software, which is also a part of delivery. It allows all units controlling, gradient creating and fraction collecting. (Fraction collector can be supplied as option)



#### ECB2007 GRADIENT BOX WITHOUT DEGASSER

Box is suited for handling liquids in ECOM gradient systems. It accommodates a container for solvent bottles and **four-way gradient valve**. Four-way gradient valve is controlled from the pumps ECP2010, ECP2050 or ECP2100.



#### SYSTEM CONTAINS

| Pcs | Description                                 | P/N       |
|-----|---|-----------|
| 1   | Flash 14 DAD 600 Detector                   | ANB0000X  |
| 1   | ECB2007 Gradient Box without Degasser       | ABD0000X  |
| 1   | ECP2100 Preparative Pump                    | ACD0000X  |
| 1   | ECOMAC software                             | AF000000  |
| 1   | Anal. injection valve with 20ul sample loop | S203200X  |
| 1   | Sample loop SS 1ml 1/16"                    | SY2124009 |
| 1   | Accessories for prep. system series 2000    | ASP00180  |

**Note:** System can be equipped with detectors with **different wavelengths range** and pumps with **different flow rate** from ECOM production.