

SOREDEX

SCANORA[®] 3Dx

New!

SCANORA[®] 3Dx – a large field-of-view
cone beam CT system with dedicated
panoramic imaging



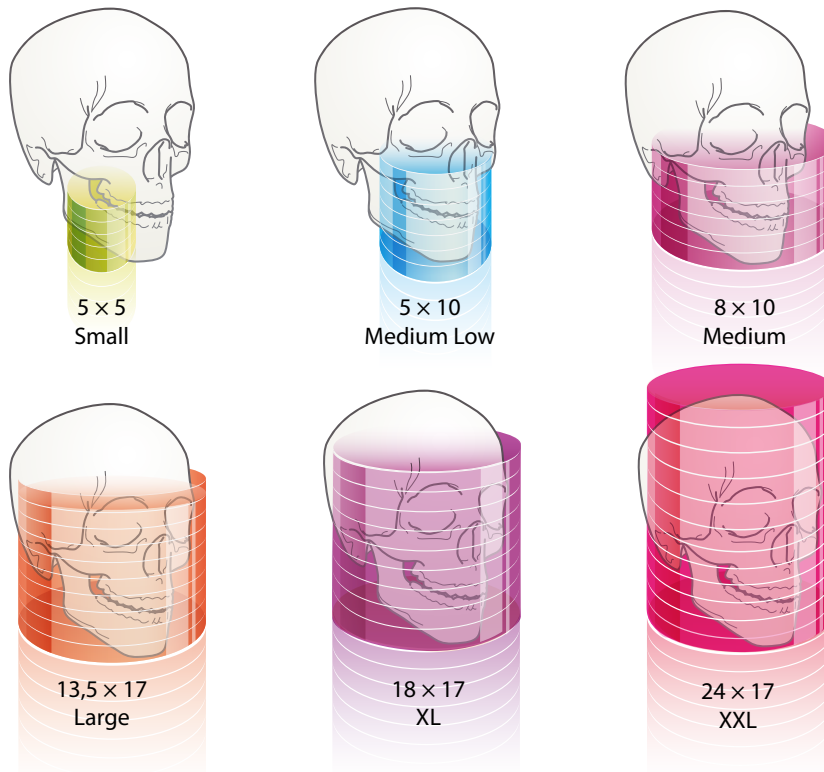
Maximum flexibility and excellent image quality in 2D and 3D

SCANORA® 3Dx - a large field-of-view cone beam CT system for the entire craniofacial area available with dedicated panoramic imaging.

Maximum flexibility, excellent image quality in 2D and 3D and the SCANORA® typical smooth workflow characterize this system. The SCANORA® 3Dx covers the entire range of applications starting from a single implant to complete ENT and orthognatic planning and diagnostics.

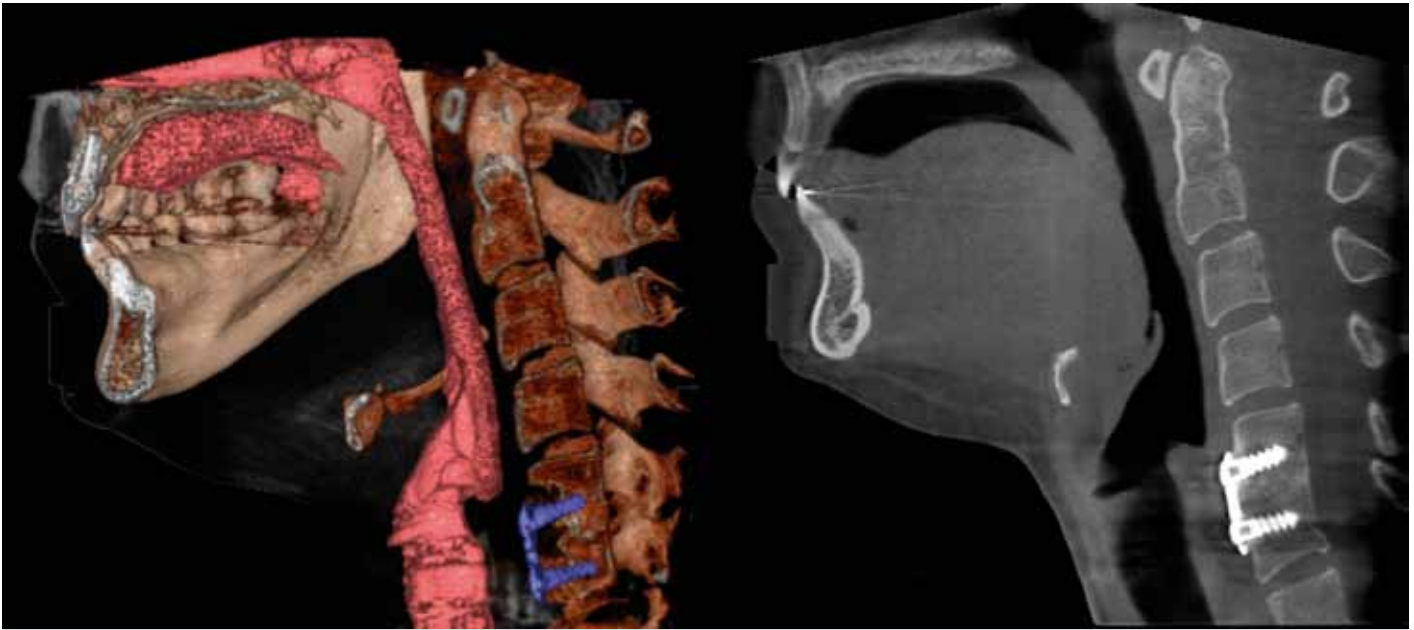
Right FOV for each task

(size in cm), H × D



SCANORA® 3Dx System highlights

- Four, plus two optional, fields-of-view from 5 × 5 cm to 24 × 17 cm
- Optional CCD – Sensor for High-resolution panoramic imaging
- Isotropic Voxel size from 0.1 to 0.5 mm
- Scan time 8 to 30 seconds
- Fully motorized chair for seated and stable patient positioning
- 90KV, 4-12.5 mA, pulsed X-ray
- 12" HD clear touch panel
- Compatible with leading Navigation systems
- DICOM®/PACS compatibility
- Small foot print



Powerful 3D visualization features in the software allow you to see air passages and bony structures side by side with CT images.

SCANORA® 3Dx FOV's

FOV(H × D) (cm)	Voxel sizes (mm)		Name	Application examples
	Std res	High res		
5 × 5	0.15	0.1	Small	Single implants, wisdom tooth, localized dental problems
5 × 10	0.25	0.15	Medium Low	Maxilla or mandible, implants, drill guides
8 × 10	0.25	0.15	Medium	Maxilla and mandible, implants
13,5 × 17	0.3	0.2	Large	Maxilla, mandible, sinuses, TMJ's, temporal bones, ENT
18 × 17 Optional	0.5	0.3	XL	Entire maxillofacial area, TMJ's, temporal bone, sinuses, airways for ENT, traumatology, Maxillofacial & orthognatic surgery
24 × 17 Optional	0.5	0.3	XXL	Entire maxillofacial area, TMJ's, temporal bone, sinuses, airways for ENT, traumatology, Maxillofacial & orthognatic surgery

Technical data

3D imaging parameters

Scan time	8-30 s
Effective exposure time	2-7.5 s
3D image receptor type	Flat panel

Dedicated panoramic imaging (Optional)

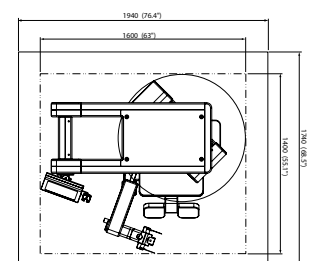
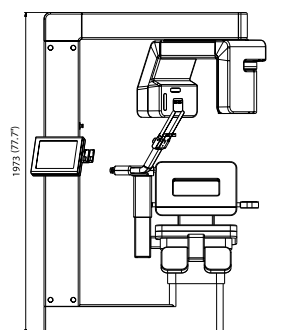
Adult panoramic program	
Child program	
Five partial sections	

X-ray generator

Tube	Fixed anode tube
Focal spot	0.5 mm IEC 60336
Target angle	15 degrees
kV	60-90
Average mA	1.0-8.0

Power requirements

Line voltage	220-240 VAC (±10 %), 50/60 Hz
--------------	----------------------------------



DIGITAL IMAGING MADE EASY™



Head Office and Factory: **SOREDEX**

Nahkelantie 160, Tuusula
P.O. Box 148, FI-04301 Tuusula
Finland
Tel. +358 10 270 2000
Fax +358 9 701 5261
info@soredex.com

Subsidiary: **SOREDEX USA**

1245 W. Canal Street
Milwaukee, WI 53233 U.S.A.
Tel. +1 800 558 6120
Fax +1 414 481 8665
usainfo@soredex.com

Subsidiary: **SOREDEX Germany**

Schutterstrasse 12
77746 Schutterwald
Germany
Tel: +49 (0) 781 28 41 98 0
Fax: +49 (0) 781 28 41 98 30
kontakt@soredex.de

Pride. Passion. Performance.

Since 1977 SOREDEX® has been a leader in providing innovative imaging solutions for demanding professionals. Through continuous evolution and refinement we have set the highest industry standards for Quality, Reliability and Efficiency.

We are committed to follow in this path today and in the future.

SCANORA® is a registered trademark of SOREDEX, PaloDEX Group Oy. Other product names and trademarks are the property of their respective owners. Manufacturing complies with ISO 13485:2003, ISO 9001:2008, and ISO 14001:2004.

DICOM® is the registered trademark of the National Electrical Manufacturers Association for its standards publications relating to digital communications of medical information.

SOREDEX® reserves the right to make changes in specifications and features shown herein at any time without notice or obligation. Contact your SOREDEX® representative for the most up-to-date information.

© 2011 SOREDEX®

207293-2 03/11 Printed in Finland



www.soredex.com • www.soredex.de • www.soredex.com/usa