

Endoscope Overview 2022



OLYMPUS

The Future of Endoscopy Has Arrived.

 www.olympus.eu/evix1

Medical Endoscopes

Medical Video Endoscopes	4
Video Gastrosopes	4
Video Colonoscopes	6
Video Duodenoscopes	8
Video Choledochoscopes	8
Video Enteroscopes	8
Capsule Endoscope	8
Video Bronchoscopes	10
Airway Mobilescopes	10
Video Pleuroscope (Medical Thoracoscopy)	12
Medical Fiber Endoscopes	14
Fiber Bronchoscopes	14
Endoscopy Integration	16
Endoscopic Ultrasound	18
Ultrasonic Videoscopes for EUS	18
Ultrasonic Endoscopes for EBUS	18
Ultrasonic Miniature Probes	20
Endoscopic Ultrasound (EUS) - Advancing EUS Applications	22
Surgical Video Endoscopes	24
ENDO-EYE Laparoscopes	24
Cystoscopes	24
Ureteroscopes	24
Rhinolaryngoscopes	26
Tracheal Intubation Scope	26
Surgical Fiber Endoscopes	28
Cystoscope	28
Ureteroscopes	28
Rhinolaryngoscopes	28
Tracheal Intubation Scopes	28
Hysteroscope	28

Not all endoscopes are available in every country.
Please contact your local Olympus representative for more information.

Medical Endoscopes

Medical Video Endoscopes										
	Insertion Tube OD (mm)	Distal End OD (mm)	Channel ID (mm)	Bending (Up/Down)	Bending (Left/Right)	Working Length (mm)	Field of View	Depth of Field (mm)	IEE ²	Comments
Video Gastroscopes										
GIF-EZ1500*	9,6	9,9	2,8	210°/90°	100°/100°	1030	140°	1,5 - 5,5 (near) 3 - 100	NBI, TXI ¹ , RDI	EDOF, ErgoGrip, DF, OT, WJ, HDTV
GIF-XZ1200*	9,9	9,9	2,8	210°/90°	100°/100°	1030	87° (tele) 140°	1,5 - 3,0 (tele) 7 - 100	NBI, TXI ¹ , RDI ¹	ErgoGrip, OT, WJ, HDTV, Zoom
GIF-1100*	8,9	8,9	2,8	210°/90°	100°/100°	1030	140°	2 - 100	NBI, TXI ¹ , RDI ¹	ErgoGrip, CF, OT, WJ, HDTV
GIF-HQ190*	9,9	9,9	2,8	210°/90°	100°/100°	1030	140°	2 - 6 (near) 5 - 100	NBI, TXI ¹ , RDI ¹	DF, OT, WJ, HDTV
GIF-H190*	9,2	9,2	2,8	210°/90°	100°/100°	1030	140°	2 - 100	NBI, TXI ¹ , RDI ¹	CF, OT, WJ, HDTV
GIF-1TH190*	10,9	10,0	3,7	210°/90°	100°/100°	1030	140°	2 - 100	NBI, TXI ¹ , RDI ¹	CF, OT, WJ, HDTV
GIF-H190N*	5,8	5,4	2,2	210°/90°	100°/100°	1100	140°	3 - 100	NBI, RDI ¹	OT, HDTV, HF-compatible
GIF-H185*	9,2	9,2	2,8	210°/90°	100°/100°	1030	140°	2 - 100	NBI, TXI ¹ , RDI ¹	CF, OT, HDTV
GIF-N180	4,9	4,9	2,0	210°/120°	—	1100	120°	3 - 100	NBI	SlimSIGHT
GIF-2TH180**	12,6	12,2	2,8/3,7	210°/90°	100°/100°	1030	140°	2 - 100	NBI	CF, HDTV
GIF-XTQ160	12,9	12,9	6,0	200°/90°	100°/100°	1030	140°	3 - 100	—	—
GIF-H290T*	9,9	9,8	3,2	210°/120°	100°/100°	1030	140°	3 - 100	NBI, TXI ¹ , RDI ¹	OT, WJ, HDTV
GIF-H290Z*	9,6	9,9	2,8	210°/90°	100°/100°	1030	95° (tele) 140°	1,5 - 3 (tele) 7 - 100	NBI, TXI ¹ , RDI ¹	OT, WJ, HDTV, Zoom
GIF-H290EC*	9,6	9,7	2,2	210°/90°	100°/100°	1030	140°	7 - 100	NBI, TXI ¹ , RDI ¹	OT, WJ, HDTV, EC
GIF-FQ260Z**	10,5	11,0	2,8	210°/90°	100°/100°	1030	60° (tele) 140°	2 - 3,5 (tele) 7 - 100	NBI	AFI, Zoom

* with CV-1500 only

* with CV-190 (PLUS) and CV-1500 only ** with CV-180 or higher

• with CV-290 and CV-1500 only •• with CV-260SL or higher

¹ only when connected to CV-1500 ² Image-Enhanced Endoscopy

OT = One-Touch Connector DF = Dual Focus CF = Close Focus

WJ = Water Jet EC = Endocytoscope EDOF = Extended Depth of Focus

AFI = Auto-Fluorescence Imaging

Medical Endoscopes

	Insertion Tube OD (mm)	Distal End OD (mm)	Channel ID (mm)	Bending (Up/Down)	Bending (Left/Right)	Working Length (mm)	Field of View	Depth of Field (mm)	IEE ²	Comments
Video Colonoscopes										
CF-EZ1500DL/I*	12.8	13.2	3.7	180°/180°	160°/160°	1680/1330	160° (near) 170°	1.5 - 5.5 (near) 3 - 100	NBI, TXI, RDI	EDOF, ErgoGrip, DF, OT, RIT, SG, WJ, HDTV
CF-XZ1200L/I*	12.8	13.2	3.7	180°/180°	160°/160°	1680/1330	90° (tele) 170°	1 - 2 (tele) 7 - 100	NBI, TXI ¹ , RDI ¹	ErgoGrip, OT, RIT, WJ, HDTV, Zoom
CF-HQ1100DL/I*	12.8	13.2	3.7	180°/180°	160°/160°	1680/1330	160° (near) 170°	2 - 6 (near) 5 - 100	NBI, TXI ¹ , RDI ¹	ErgoGrip, DF, OT, RIT, SG, WJ, HDTV
CF-HQ190L/I*	12.8	13.2	3.7	180°/180°	160°/160°	1680/1330	160° (near) 170°	2 - 6 (near) 5 - 100	NBI, TXI ¹ , RDI ¹	DF, OT, RIT, SG, WJ, HDTV
CF-H190L/I*	12.8	13.2	3.7	180°/180°	160°/160°	1680/1330	170°	2 - 100	NBI, TXI ¹ , RDI ¹	CF, OT, RIT, WJ, HDTV
PCF-HQ190L/I*	12.0	11.8	3.2	180°/180°	160°/160°	1680/1330	170°	2 - 6 (near) 5 - 100	NBI, TXI ¹ , RDI ¹	DF, OT, RIT, SG, WJ, HDTV
PCF-H190DL/I*	11.8	11.7	3.2	180°/180°	160°/160°	1680/1330	170°	2 - 100	NBI, TXI ¹ , RDI ¹	CF, OT, RIT, SG, WJ, HDTV
PCF-H190L/I*	11.5	11.7	3.2	180°/180°	160°/160°	1680/1330	170°	2 - 100	NBI, TXI ¹ , RDI ¹	CF, OT, RIT, WJ, HDTV
PCF-H190TL/I*	10.5	9.8	3.2	210°/180°	160°/160°	1680/1330	140°	2 - 100	NBI, TXI ¹ , RDI ¹	CF, OT, RIT (HFT, VS), WJ, HDTV
PCF-PH190L/I*	9.5	9.7	3.2	180°/180°	160°/160°	1680/1330	140°	2 - 100	NBI, TXI ¹ , RDI ¹	CF, OT, RIT (HFT, PB), HDTV
CF-H185L/I*	12.8	12.8	3.7	180°/180°	160°/160°	1680/1330	140°	2 - 100	NBI, TXI ¹ , RDI ¹	CF, OT, VS, WJ, HDTV
CF-2T160L	13.7	13.8	3.7/3.2	180°/180°	160°/160°	1665	140°	3 - 100	—	—
CF-HQ290ZL/I*	12.8	13.2	3.7	180°/180°	160°/160°	1680/1330	90° (tele) 170°	2 - 3 (tele) 7 - 10	NBI, TXI ¹ , RDI ¹	OT, RIT, WJ, HDTV, Zoom
CF-H290ECI*	12.8	12.8	3.2	180°/180°	160°/160°	1330	140°	7 - 100	NBI, TXI ¹ , RDI ¹	OT, RIT (HFT, VS), WJ, HDTV, EC
PCF-H290ZL/I*	11.8	11.7	3.2	180°/180°	160°/160°	1680/1330	85° (tele) 170°	1 - 2 (tele) 7 - 100	NBI, TXI ¹ , RDI ¹	OT, RIT, WJ, HDTV, Zoom
CF-FH260AZL/I**	13.2	14.8	3.2	180°/180°	160°/160°	1680/1330	80° (tele) 140°	2 - 3 (tele) 7 - 10	NBI	AFI, VS, WJ, HDTV, Zoom

* with CV-1500 only

* with CV-190 (PLUS) and CV-1500 only

• with CV-290 and CV-1500 only •• with CV-260SL or higher

¹ only when connected to CV-1500 ² Image-Enhanced Endoscopy

EDOF = Extended Depth of Focus OT = One-Touch Connector

DF = Dual Focus CF = Close Focus HFT = High-Force Transmission

RIT = Responsive Insertion Technology SG = ScopeGuide WJ = Water Jet

VS = Variable Stiffness EC = Endocytoscope AFI = Auto-Fluorescence Imaging

Medical Endoscopes

	Insertion Tube OD (mm)	Distal End OD (mm)	Channel ID (mm)	Bending (Up/Down)	Bending (Left/Right)	Working Length (mm)	Field of View	Depth of Field (mm)	IEE ²	Comments
Video Duodenoscopes										
TJF-Q190V*	11.3	13.5	4.2	120°/90°	90°/110°	1240	100°/15° (retro)	5 - 60	NBI, TXI ¹ , RDI ¹	OT, HFT, V-System
TJF-Q290V*	11.3	13.5	4.2	120°/90°	110°/90°	1240	100°/15° (retro)	5 - 60	NBI, TXI ¹ , RDI ¹	OT, HFT, V-System
Video Choledochoscopes										
CHF-B290*	3,53 [‡]	3,3	1,3	70°/70°	—	1920	80°	1,5 - 20	NBI, RDI ¹	CF, OT, Baby scope
CHF-V**	5,2	4,9	2,0	160°/130°	—	380	120°	3 - 50	NBI, RDI ¹	—
Video Enteroscopes										
PSF-1*	11,5 ^{§§}	11,3	3,2	180°/180°	160°/160°	1680	140°	2 - 100	NBI, TXI ¹ , RDI ¹	OT, WJ, motorized spiral enteroscope
SIF-H190*	9,2	9,2	3,2	180°/180°	160°/160°	2000	140°	3 - 100	NBI, TXI ¹ , RDI ¹	OT, RIT (HFT, PB), HDTV
SIF-Q180	9,2	9,2	2,8	180°/180°	160°/160°	2000	140°	3 - 100	NBI	—
SIF-H290S*	9,2	9,2	3,2	180°/180°	160°/160°	1520	140°	3 - 100	NBI, TXI ¹ , RDI ¹	OT, RIT (HFT, PB), HDTV
Capsule Endoscope										
EC-S10***	11,0	11,0	—	—	—	26	160°	0 - 20	—	—

* with CV-190 (PLUS) and CV-1500 only ** with CV-180 or higher

*** with EC-10 ENDOCAPSULE system only

• with CV-290 and CV-1500 only •• with CV-260SL or higher

‡ 3,75 mm from the proximal end to 1390 mm

§§ 12,8 mm from the proximal end to rotation part

¹ only when connected to CV-1500 ² Image-Enhanced Endoscopy

OT = One-Touch Connector RIT = Responsive Insertion Technology
WJ = Water Jet HFT = High-Force Transmission

Medical Endoscopes

	Insertion Tube OD (mm)	Distal End OD (mm)	Channel ID (mm)	Bending (Up/Down)	Rotation Function (Left/Right)	Working Length (mm)	Field of View	Depth of Field (mm)	IEE ²	Comments
Video Bronchoscopes										
BF-1TH1100*	6.1	5.8	3.0	180°/130°	120°/120°	600	120°	3 - 100	NBI, TXI ¹ , RDI ¹	HDTV, OT, ROTATION FULLSCREEN ¹
BF-H1100*	4.9	4.9	2.2	210°/130°	120°/120°	600	120°	3 - 100	NBI, TXI ¹ , RDI ¹	HDTV, OT, ROTATION FULLSCREEN ¹
BF-XT190*	6.3	6.1	3.2	180°/130°	120°/120°	600	110°	2 - 50	NBI, TXI ¹ , RDI ¹	OT
BF-1TH190*	6.0	6.2	2.8	180°/130°	120°/120°	600	120°	3 - 100	NBI, TXI ¹ , RDI ¹	HDTV, OT, ROTATION
BF-H190*	5.1	5.5	2.0	210°/130°	120°/120°	600	120°	3 - 100	NBI, TXI ¹ , RDI ¹	HDTV, OT, ROTATION
BF-Q190*	4.9	4.8	2.0	210°/130°	120°/120°	600	120°	3 - 100	NBI, TXI ¹ , RDI ¹	OT, ROTATION
BF-P190*	4.1	4.2	2.0	210°/130°	120°/120°	600	110°	2 - 50	NBI, TXI ¹ , RDI ¹	OT, ROTATION
BF-MP190F*	3.7	3.0	1.7	210°/130°	120°/120°	600	90°	2 - 50	TXI ¹	OT, ROTATION
BF-XP190*	2.8	3.1 ⁰	1.2	210°/130°	120°/120°	600	110°	2 - 50	NBI, TXI ¹	OT, ROTATION
BF-1TH1200°	6.1	5.8	3.0	180°/130°	120°/120°	600	120°	3 - 100	NBI, TXI ¹ , RDI ¹	HDTV, OT, ROTATION FULLSCREEN ¹
BF-H1200°	4.9	4.9	2.2	210°/130°	120°/120°	600	120°	3 - 100	NBI, TXI ¹ , RDI ¹	HDTV, OT, ROTATION FULLSCREEN ¹
BF-1TQ290°	6.0	5.9	3.0	180°/130°	120°/120°	600	120°	2 - 100	NBI, TXI ¹ , RDI ¹	OT, ROTATION
BF-H290°	5.7	6.0	2.0	210°/130°	120°/120°	600	120°	3 - 100	NBI, TXI ¹ , RDI ¹	HDTV, OT, ROTATION
BF-Q290°	4.9	4.8	2.0	210°/130°	120°/120°	600	120°	2 - 100	NBI, TXI ¹ , RDI ¹	OT, ROTATION
BF-P290°	4.1	4.2	2.0	210°/130°	120°/120°	600	110°	2 - 50	NBI, TXI ¹ , RDI ¹	OT, ROTATION
BF-MP290F°	3.7	3.0	1.7	210°/130°	120°/120°	600	90°	2 - 50	TXI ¹	OT, ROTATION
BF-XP290°	2.8	3.1	1.2	210°/130°	120°/120°	600	110°	2 - 50	NBI, TXI ¹ , RDI ¹	OT, ROTATION
BF-F260**	5.4	5.5	2.0	180°/130°	—	600	120°	3 - 100	AFI	—
Airway Mobilescopes										
MAF-TM2	5.2	5.1	2.6	180°/130°	—	600	90°	3 - 50	—	Display rotation: 90° right /90° left tilting: 0-120° Display size: 3.5"
MAF-GM2	4.1	3.9	1.5	120°/120°	—	600	90°	4 - 50	—	
MAF-DM2	3.1	3.1	1.2	120°/120°	—	600	90°	2 - 50	—	

* with CV-190 (PLUS) and CV-1500 only

• with CV-290 and CV-1500 only •• with CV-260SL or higher

⁰ tapered part of distal end 2.9 mm

¹ only when connected to CV-1500 ² Image-Enhanced Endoscopy

OT = One-Touch Connector ROTATION = Insertion Tube Rotation Function
AFI = Auto-Fluorescence Imaging

Medical Endoscopes

	Insertion Tube OD (mm)	Distal End OD (mm)	Channel ID (mm)	Bending (Up/Down)	Rotation Function (Left/Right)	Working Length (mm)	Field of View	Depth of Field (mm)	IEE ²	Comments
Video Pleuroscope (Medical Thoracoscopy)										
LTF-H290^o	7.0	7.3	3.0	180°/130°	—	270	120°	7 - 100	NBI, TXI ¹ , RDI ¹	HDTV, OT

• with CV-290 and CV-1500 only
¹ only when connected to CV-1500
² Image-Enhanced Endoscopy

Medical Endoscopes

Medical Fiber Endoscopes

	Insertion Tube OD (mm)	Distal End OD (mm)	Channel ID (mm)	Bending (Up/Down)	Bending (Left/Right)	Working Length (mm)	Field of View	Depth of Field (mm)	Comments
Fiber Bronchoscopes									
BF-1T60	6.0	5.9	3.0	180°/130°	—	600	120°	3 - 50	—
BF-P60	5.0	4.9	2.2	180°/130°	—	600	120°	3 - 50	—
BF-XP60	2.8	2.8	1.2	180°/130°	—	600	90°	2 - 50	—
BF-N20	2.2	1.8	—	160°/90°	—	550	75°	2 - 50	—
BF-TE2	6.0	5.9	2.8	180°/130°	—	600	120°	3 - 50	—
BF-PE2	5.0	4.9	2.2	180°/130°	—	600	120°	3 - 50	—

Endoscopy Integration

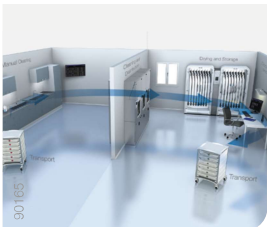
Olympus provides the total integration solution for endoscopy, consisting of modular components that are combined to meet the individual needs of the hospital. Utmost support is ensured throughout the workflow from patient reception to the examination, via the reprocessing and recovery areas, ending in the doctor's office and training room facilities.



Examination Room

A high level of ergonomics, efficiency, and communication in a modern and friendly ambience.

- Optimized workspace and patient comfort
- Integrated HD documentation system
- Saving space, examination, and cleaning time



Reprocessing Area

Hygiene supports and secures the endoscope's workflow with full traceability and documentation of all relevant reprocessing steps.

- ETD Double, ETD4 and ETD Mini washer disinfectors
- EDC Plus drying and storage cabinets
- ETS Plus and PROTECH protective solutions for storage and transportation
- Hytrack endoscope reprocessing documentation software



Recovery Area

Patient comfort and safety in perfection – a central overview of the status of the rooms, support smooth processes and a stressless atmosphere.

- Access to status of endoscopy room
- Patient-care documentation for recovery nurse



Doctor's Office

In the office but with an optimal audio/video connection to the examination rooms. Access from the PC to all data and images and reporting system.

- Access to centralized patient/procedure information
- Audio/video connection to examination rooms
- Tools for activity and cost analysis



Training / Meeting Room

The media center for training, courses, and seminars with advanced video management, including live video and bidirectional communication from examination rooms.

- Access/display of departmental activity information
- IP audio/video routing and multi-display functionality

Endoscopic Ultrasound

Endoscopic Ultrasound									
	Insertion Tube OD (mm)	Channel ID (mm)	Bending (Up/Down Left/Right)	Working Length (mm)	Ultrasound Field of View	Endoscopic Field of View (Forward/Oblique)	Depth of Field (mm)	Frequency (MHz)	Scanning Mode
Ultrasonic Videoscopes for EUS									
GF-UE190	10,9	2,2	130°/90° 90°/90°	1250	360°	100°/50°	3 - 100	5/6/7,5/10/12*	Electronic 360° radial array
GF-UCT180	12,6	3,7	130°/90° 90°/90°	1250	180°	100°/55°	3 - 100	5/6/7,5/10/12*	Electronic curved linear array
TGF-UC180J	12,6	3,7	180°/90° 90°/90°	1245	90°	120°/0°	3 - 100	5/6/7,5/10/12*	Forward-viewing, electronic curved linear array
GF-UE290	10,9	2,2	130°/90° 90°/90°	1250	360°	100°/50°	3 - 100	5/6/7,5/10/12*	Electronic 360° radial array
GF-UCT260	12,6	3,7	130°/90° 90°/90°	1250	180°	100°/55°	3 - 100	5/6/7,5/10/12*	Electronic curved linear array
TGF-UC260J	12,6	3,7	180°/90° 90°/90°	1245	90°	120°/0°	3 - 100	5/6/7,5/10/12*	Forward-viewing, electronic curved linear array
Ultrasonic Endoscopes for EBUS									
BF-UC190F**	6,3	2,2	160°/70° —	600	65°	80°/20°	2 - 50	5/6/7,5/10/12*	Electronic curved linear array
BF-UC290F**	6,3	2,2	160°/70° —	600	65°	80°/20°	2 - 50	5/6/7,5/10/12*	Electronic curved linear array

* with EU-ME2. Please contact your Olympus representative for compatibility with other systems.

** fiber videoscope for the best ratio between outer diameter and working channel size

Endoscopic Ultrasound

	Frequency (MHz)	Working Length (mm)	Insertion Tube OD (mm)	Comp. Biopsy Channel (mm)	Compatible with	Comp. Biopsy Channel (mm) for Sheath	Scanning Mode
Ultrasonic Miniature Probes							
UM-2R	12	2050	2,5	2,8	–	3,7	Mechanical radial
UM-S20-17S	20	2150	Max. 1,8	1,7	K-201/K-202 GuideSheathKit	2,0	Mechanical radial
UM-S20-20R	20	2050	Max. 2,0	2,2*	K-203/K-204 GuideSheathKit and K-403/K-403 GuideSheathKit 2	2,6	Mechanical radial

* 2,0 mm in bronchoscopes

Endoscopic Ultrasound (EUS)

Advancing EUS Applications

Diagnostic and Interventional EUS

Full range of advanced ultrasound processors with dedicated features for EUS and EUS-ERCP applications and EUS endoscopes with outstanding maneuverability.

A comprehensive variety of EUS-FNB needles with superior flexibility to obtain tissue from difficult scope positions and EUS-FNA needles with improved echogenicity for controlled sampling.



Surgical Endoscopes

Surgical Video Endoscopes											
	Insertion Tube OD (mm)	Distal End OD (mm)	Channel ID (mm)	Bending (Up/Down)	Bending (Left/Right)	Working Length (mm)	Direction of View	Field of View	Depth of Field (mm)	IEE ²	HDTV/SDTV
ENDOYE Laparoscopes											
ENDOYE 3D, 10 mm 0°	10,0	10,0	-	-	-	330	0°	57°	25 - 120	NBI	HDTV
ENDOYE 3D, 10 mm 30°	10,0	10,0	-	-	-	335	30°	57°	25 - 120	NBI	HDTV
ENDOYE FLEX 3D, 10 mm	10,0	10,0	-	100°/100°	100°/100°	370	0°	80°	18 - 100	NBI	HDTV
ENDOYE HD II, 10 mm 0°	10,0	10,0	-	-	-	325	0°	90°	21 - 200	NBI	HDTV
ENDOYE HD II, 10 mm 30°	10,0	10,0	-	-	-	330	30°	90°	21 - 200	NBI	HDTV
ENDOYE FLEX, 10 mm	10,0	10,0	-	100°/100°	100°/100°	370	0°	100°	18 - 200	NBI	HDTV
ENDOYE HD II, 5 mm 0°	5,4	5,4	-	-	-	325	0°	90°	21 - 200	NBI	HDTV
ENDOYE HD II, 5 mm 30°	5,4	5,4	-	-	-	330	30°	90°	21 - 200	NBI	HDTV
ENDOYE FLEX, 5 mm	5,4	5,3	-	100°/100°	100°/100°	370	0°	85°	18 - 100	NBI	HDTV
Cystoscopes											
CYF-VH/-VHA/-VHR	5,5	2,7	2,2	220°/130°	-	380	0°	120°	3 - 50	NBI	HDTV
CYF-V2/VA2	5,4	4,8	2,2	210°/120°	-	380	0°	120°	3 - 50	NBI	SDTV
Ureteroscopes											
URF-V3	2,83	2,83	1,2	275°/275°	-	670	0°	80°	1,5 - 50	NBI	SDTV
URF-V2	2,8	2,83	1,2	275°/275°	-	670	0°	80°	2 - 50	NBI	SDTV
URF-V	3,3	2,8	1,2	180°/275°	-	670	0°	90°	2 - 50	NBI	SDTV

All rigid endoscopes are compatible with EXERA III / VISERA ELITE via 3 CCD HD camera heads (HDTV), 1 CCD HD camera heads (HDTV) and via VISERA camera heads (SDTV).

² Image-Enhanced Endoscopy

Surgical Endoscopes

	Insertion Tube OD (mm)	Distal End OD (mm)	Channel ID (mm)	Bending (Up/Down)	Bending (Left/Right)	Working Length (mm)	Direction of View	Field of View	Depth of Field (mm)	IEE ²	HDTV/SDTV
Rhinolaryngoscopes											
ENF-VH2	3.6	3.9	–	130°/130°	–	300	0°	110°	3 - 50	NBI	HDTV
ENF-VH	3.6	3.9	–	130°/130°	–	300	0°	110°	3 - 50	NBI	HDTV
ENF-V4	2.9	2.6	–	130°/130°	–	300	0°	90°	4 - 50	NBI	SDTV
ENF-V3	2.9	2.6	–	130°/130°	–	300	0°	90°	3 - 50	NBI	SDTV
ENF-V2	3.4	3.2	–	130°/130°	–	300	0°	90°	5 - 50	NBI	SDTV
ENF-VT3	4.9	4.8	2.0	130°/130°	70°/70°	365	0°	90°	2 - 50	NBI	SDTV
ENF-VT2	4.9	4.8	2.0	130°/130°	–	365	0°	90°	2 - 40	NBI	SDTV
ENF-VQ	3.6	3.9	–	130°/130°	–	300	0°	90°	5 - 50	NBI	SDTV
Tracheal Intubation Scope											
LF-V	4.1	3.8	1.2	120°/120°	–	600	0°	120°	3 - 50	–	SDTV

All rigid endoscopes are compatible with EXERA III / VISERA ELITE via 3 CCD HD camera heads (HDTV), 1 CCD HD camera heads (HDTV) and via VISERA camera heads (SDTV).

² Image-Enhanced Endoscopy

Surgical Endoscopes

Surgical Fiber Endoscopes								
	Insertion Tube OD (mm)	Distal End OD (mm)	Channel ID (mm)	Bending (Up/Down)	Bending (Left/Right)	Working Length (mm)	Field of View	Depth of Field (mm)
Cystoscope								
CYF-5/5A	5.5	4.6	2.4	210°/120°	–	380	120°	3 - 50
Ureteroscopes								
URF-P7	2.83	1.63	1.2	275°/275°	–	700	90°	2 - 50
URF-P6	2.65	1.7	1.2	275°/275°	–	700	90°	2 - 50
URF-P5	2.8	1.77	1.2	180°/275°	–	700	90°	2 - 50
Rhinolaryngoscopes								
ENF-GP2	3.6	3.5	–	130°/130°	–	300	85°	5 - 50
ENF-GP	3.6	3.4	–	130°/130°	–	300	85°	5 - 50
ENF-P4	3.6	3.4	–	130°/130°	–	300	85°	2.5 - 50
ENF-XP	2.2	1.8	–	130°/130°	–	300	75°	2.5 - 50
ENF-T3	5.0	4.8	2.2	130°/130°	–	365	85°	5 - 50
Tracheal Intubation Scopes								
LF-P	2.2	1.8	–	120°/120°	–	600	75°	3 - 50
LF-GP	4.1	3.8	1.5	120°/120°	–	600	90°	4 - 50
LF-DP	3.1	3.1	1.2	120°/120°	–	600	90°	3 - 50
LF-TP	5.2	5.1	2.6	180°/130°	–	600	90°	3 - 50
Hysteroscope								
HYF-XP	3.1	3.0	1.2	100°/100°	–	230	100°	2 - 50

All fiber endoscopes are compatible with EXERA III / VISERA ELITE via 3 CCD HD camera heads (HDTV), 1 CCD HD camera heads (HDTV) and via VISERA camera heads (SDTV).

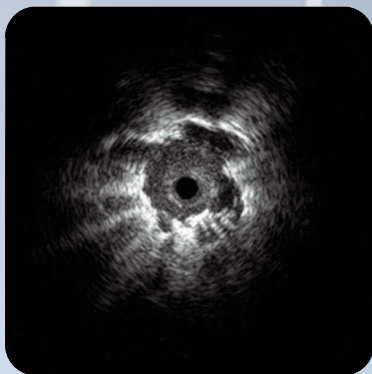
Advancing the Art of Bronchoscopy

Finding and Sampling of Peripheral Pulmonary Lesions

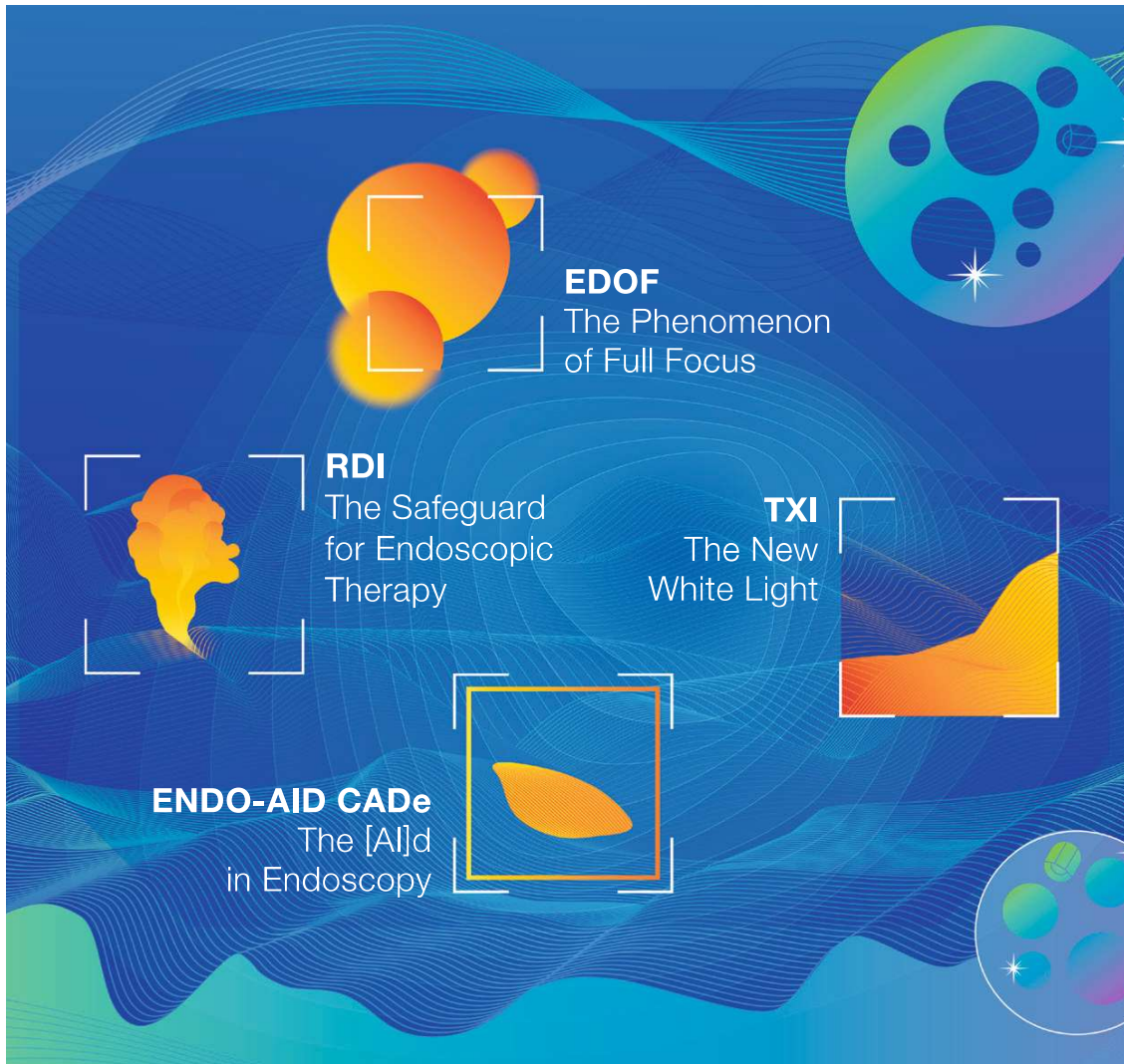
Peripheral Pulmonary Lesion

Real-time confirmation of the lesion through endobronchial ultrasound using an EBUS miniature probe.

Combining EBUS with a GuideSheath enables easy and repeated access to the lesion via sampling devices.



23554



Let's Be Clear

Elevating the Standard of Endoscopy

 www.olympus.eu/evisx1

EVIS X1



As medical knowledge is constantly growing, technical modifications or changes of the product design, product specifications, accessories and service offerings may be required.

OLYMPUS

OLYMPUS EUROPA SE & CO. KG

Postbox 10 49 08, 20034 Hamburg, Germany
www.olympus-europa.com