

TELE PACK X LED – New Dimensions in LED Stroboscopy



The TELE PACK X LED continues the tradition of the portable all-in-one systems by KARL STORZ. It can be used for a wide range of applications from the doctor's office through to the operating room and, therefore, offers ENT a considerable advantage. The optional stroboscopy function highlights the performance range. A wide range of accessories is available for this purpose.

The powerful all-in-one unit combines all the features required for optimal endoscopic imaging: Monitor, camera and light source. Integrated data management enables comprehensive recording of surgical interventions. Multiple USB ports and an SD card slot are available to store the data.



A compact combination of a powerful LED light source, monitor and camera – the TELE PACK X LED – with an additional option for stroboscopy.

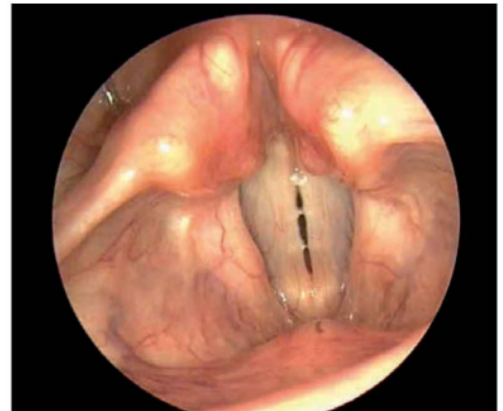
The USB footswitch activates the unit's stroboscopy mode. In combination with the microphone set, the TELE PACK X LED provides an optimal view of the vocal folds.



USB footswitch



microphone set



Use the convenient TELE PACK X LED as a stroboscope and benefit from a high-performance LED that provides lighting for optimal stroboscopy as well as excellent continuous light.

The unit's camera and documentation function allows easy and rapid data processing.

Why TELE PACK X LED?

- Compact and portable all-in-one solution for stroboscopy
- High-resolution display
- Low energy consumption and long life LED lamps thanks to cutting-edge LED technology
- Flash and continuous light with the same brightness and color temperature
- Powerful flash even with thin and flexible endoscopes
- Noisefree
- Text overlay on video image
- Display in musical notation (either national or international)



TP100



TP100 EN **TELE PACK X LED**, endoscopic video unit for use with all KARL STORZ TELECAM one-chip camera heads and video endoscopes, incl. LED light source similar to Xenon technology, with integrated digital Image Processing Module, 15" LCD monitor with LED backlight, USB/SD memory module, color systems PAL/NTSC, power supply 100-240 VAC, 50/60 Hz including:
USB Silicone Keyboard, with touchpad, with US character set
USB Flash Drive, 8 GB
Mains Cord

Specifications:

Power input	100 W
Power supply	100-240 VAC
Dimensions w x h x d	450 x 350 x 150
Weight	7 kg
Interfaces	<ul style="list-style-type: none"> - Video interface: DVI-D (in/out) - Audio: 3.5 mm jack (1x side, 1x rear), Line-in, Line-out - Footswitch port: 5-pin socket for footswitch - Printer port: USB - Footswitch for stroboscopy: USB

Light source	<ul style="list-style-type: none"> - Lamp: LED - Color temperature: 6300 K - Average life span: approx. 30,000 hours
Image format	JPG
Video codec	MPEG-4
Video format	PAL/NTSC
Storage interface	USB 2.0; SD memory card (SDHC-compatible)
LED backlight monitor	<ul style="list-style-type: none"> - Screen size: 15" - Resolution: 1024 x 768 - Contrast: 700:1
Loudspeaker	Power: 2 W

Stroboscopy Kit

40 1600 40 Stroboscopy Kit consisting of:	
	40 160033 Footswitch TELE PACK X LED , USB footswitch with integrated activation key for stroboscopy function (plug & play), for use with KARL STORZ TELE PACK X LED, TP100
	40 160031 Microphone Set , including: microphone fitting, microphone holder, microphone membrane, connector for microphone membrane, for use with KARL STORZ TELE PACK X LED, TP100

Compatible Camera Heads

20212040	PAL	TELECAM One-Chip Camera Head, autoclavable, soakable, gas-sterilizable, with integrated Parfocal Zoom Lens, f = 14-28 mm (2x), 2 freely programmable camera head buttons, including plastic container for sterilization
20212140	NTSC	
20212030	PAL	TELECAM One-Chip Camera Head, soakable, gas-sterilizable, with integrated Parfocal Zoom Lens, f = 25-50 mm (2x), 2 freely programmable camera head buttons
20212130	NTSC	
20212034	PAL	TELECAM C-MOUNT One-Chip Camera Head, soakable, gas-sterilizable, 2 freely programmable camera head buttons
20212134	NTSC	
20212032	PAL	TELECAM Beamsplitter One-Chip Camera Head, soakable, gas-sterilizable, 2 freely programmable camera head buttons, with rotating CCD sensor, f = 25 mm
20212132	NTSC	
20212031	PAL	TELECAM Beamsplitter One-Chip Camera Head, soakable, gas-sterilizable, 2 freely programmable camera head buttons, with rotating CCD sensor, f = 30 mm
20262030	PAL	DCI® II One-Chip Camera Head, soakable, gas-sterilizable, f = 16 mm, with 2 freely programmable camera head buttons, for use with DCI® HOPKINS® telescopes
20262130	NTSC	

Compatible Video Endoscopes

ENT		
11101 VP	PAL	Video Rhino-Laryngoscope
11101 VN	NTSC	

All listed video endoscopes must be connected with Video Connecting Cable **20 213070**.

Compatible Rigid Endoscopes:



8700 DKA **Tele-Laryngo-Pharyngoscope**, with integrated HOPKINS® lateral telescope 90°, diameter 5.8 mm, length 20 cm, **autoclavable**, fiber optic light transmission incorporated, color code: blue

8700 H **Handle**, for use with Tele-Laryngoscopes 8700 CP, 8700 CKA, 8705 CKA and 8700 DKA



8705 CKA **BENJAMIN Slimline Tele-Laryngoscope**, with integrated HOPKINS® lateral telescope 70°, angle of view 50°, diameter 4 mm, length 18 cm, **autoclavable**, fiber optic light transmission incorporated, color code: yellow

8700 H **Handle**, for use with Tele-Laryngoscopes 8700 CP, 8700 CKA, 8705 CKA and 8700 DKA



8700 CKA

BENJAMIN Tele-Laryngoscope, with integrated HOPKINS® lateral telescope 70°, angle of view 50°, diameter 5.8 mm, length 19 cm, **autoclavable**, fiber optic light transmission incorporated, color code: yellow

8700 H

Handle, for use with Tele-Laryngoscopes 8700 CP, 8700 CKA, 8705 CKA and 8700 DKA



8706 CA






Strobe-Laryngoscope, with integrated HOPKINS® lateral telescope 70°, oval sheath, 7.2 x 9.3 mm, working length 17 cm, **autoclavable**, fiber optic light transmission incorporated, color code: yellow



8707 DA

Tele-Laryngo-Pharyngoscope, with integrated HOPKINS® lateral telescope 90°, 4x magnification focusing device, diameter 10 mm, length 15 cm, **autoclavable**, fiber optic light transmission incorporated, color code: blue

Accessories

	<p>20200043 C-MOUNT Lens, f = 38 mm, soakable 20200042 C-MOUNT Lens, f = 30 mm, soakable 20230141 C-MOUNT Lens, f = 25 mm, soakable 20230145 C-MOUNT Lens, f = 12 mm, soakable</p>
	<p>20014130 One-Pedal Footswitch, digital, one-stage</p>
	<p>20014330 Two-Pedal Footswitch, one-stage</p>
	<p>ET14-2191291 USB Flash Drive, 8 GB with KARL STORZ labeling 20040282 KARL STORZ USB Flash Drive, 32 GB</p>
	<p>549 M USB Color Printer, digital A4 printer, with 4 frame memories, power supply 100-240 VAC, 50/60 Hz, including mains cord</p>

Fiberscope Adaptors for other manufacturers

	<p>29020 GM Adaptor, for Machida fiberscopes</p>
	<p>29020 GN Adaptor, for Olympus fiberscopes, new type</p>
	<p>29020 GO Adaptor, for Olympus fiberscopes, old type</p>
	<p>29020 GP Adaptor, for Pentax and Fujinon fiberscopes</p>

Notes



Notes





WWW.KARLSTORZ.COM

KARL STORZ GmbH & Co. KG
Mittelstraße 8, 78532 Tuttlingen, Germany
Postbox 230, 78503 Tuttlingen, Germany
Phone: +49 (0)7461 708-0
Fax: +49 (0)7461 708-105
E-Mail: info@karlstorz.com
www.karlstorz.com

KARL STORZ Endoscopy-America, Inc.
2151 East Grand Avenue
El Segundo, CA 90245-5017, USA
Phone: +1 424 218-8100
Phone toll free: 800 421-0837 (US only)
Fax: +1 424 218-8525
Fax toll free: 800 321-1304 (US only)
E-Mail: info@ksea.com