

TES 99

Tissue Embedding System

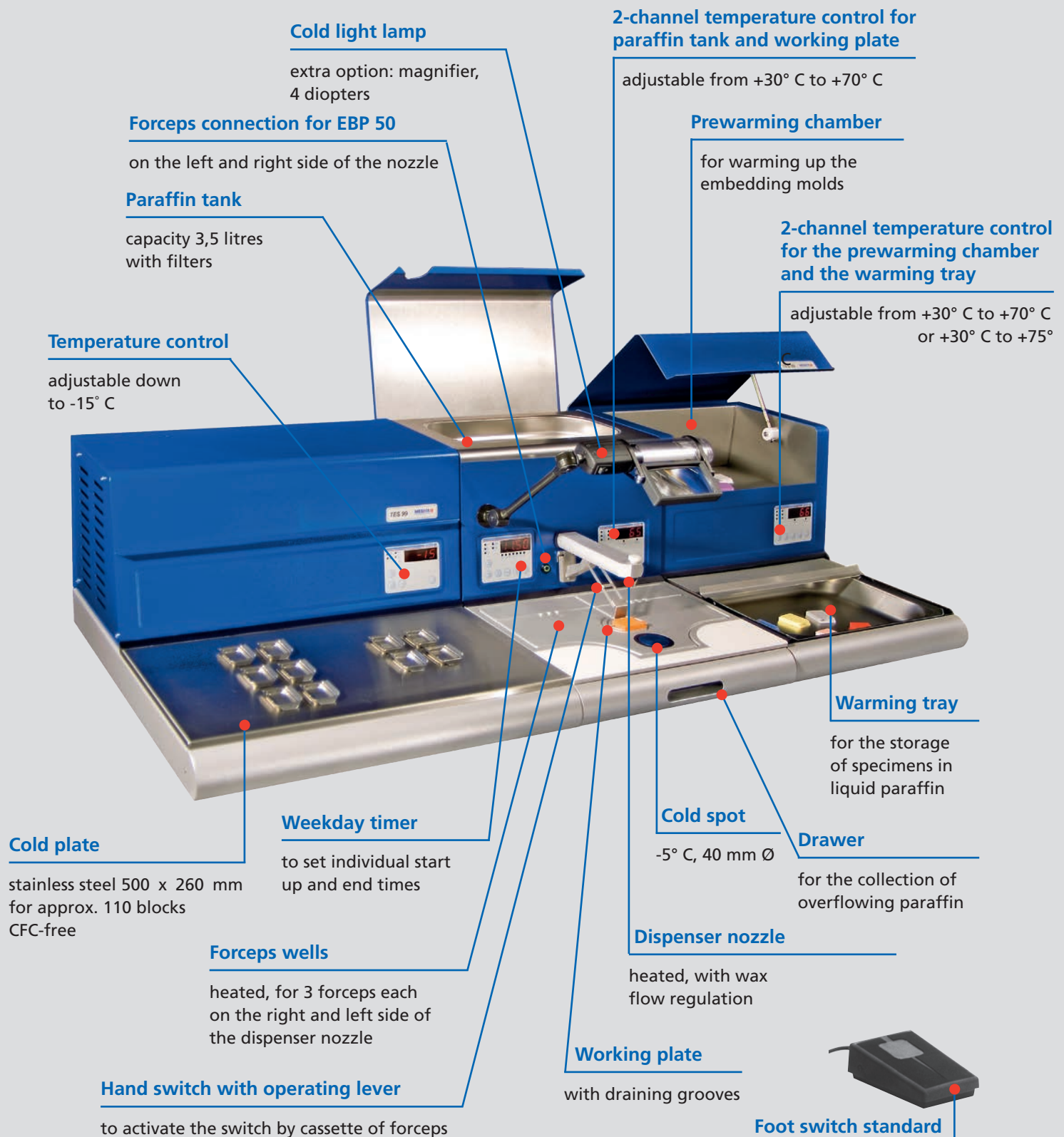


- *Unique 3-modular system - for an ergonomical working*
- *High variety by combining the modular units*
- *Rapid embedding of tissue specimens in paraffin, great for large quantities*
- *Optional equipped with new heated forceps, hot only at the tip*

TES 99

Tissue Embedding System

The new designed flexible working place **TES 99** allows a comfortable, rapid and accurate embedding of tissue specimens in paraffin. Due to its modular design, the separate units can be combined according to your needs and meet the individual technical and personal requirements of any laboratory.



With its great variety of units (please refer to the details below and on next page) the **TES 99** tissue embedding system is not to be missed in your lab. You can select from three models, each including one dispenser unit, one of three different cool units and one thermal unit. Its excellent ergonomics offers less user fatigue but more well-being advantages. The system allows a large operating volume due to the high capacity of the modules. Apart from the appealing design of the units the system is exceptional due to its high functionality and service quality.

The cold light lamp assures an optimum illumination of the work area and the optional magnifying lens is simply clicked onto it. The paraffin flow is infinitely adjustable and operated by hand or foot switch. The different temperatures are independently adjustable and visible by digital control. The dispenser unit is equipped with a programmable timer and includes two connections for our **EBP 50** heated forceps as well as forceps wells on the left and right side of the nozzle as standard.

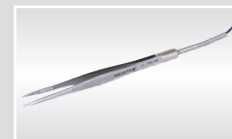
Single units

Dispenser unit TES 99.250/99.350

The dispenser unit **TES 99.250** with its large working area and the heat protective hand rest provides comfortable embedding with all kinds of systems and tissue specimens of any size.

Technical data:

| | |
|----------------------------------|-------------------------------|
| Capacity of paraffin tank: | 3,5 liters |
| Total dimensions (W/D/H): | 360 x 570 x 300 mm |
| Dimensions working plate (W/D): | 360 x 245 mm |
| Temperature: | +30° C to +70° C |
| Cold spot: | -5° C, 40 mm Ø |
| Connections for 2 forceps EBP 50 | |
| Heating for 6 forceps | |
| Weight: | 22 kg |
| Power supply: | 115-230 V / 50/60 Hz / 350 VA |
| Optional: | magnifier, 4 diopters |



Option:
EBP 50

Heated forceps for the direct connection to the dispenser unit.

Thermal unit TES 99.600/99.700

The thermal unit **TES 99.600** serves for the warming up and storage of all kinds of embedding molds and cassettes. It is divided into two compartments: one for molds and one for liquid paraffin with removable stainless steel tray.

Technical data:

| | |
|-----------------------------------|-------------------------------|
| Total dimensions (W/D/H): | 360 x 570 x 300 mm |
| Dimensions warming chamber (W/D): | 305 x 205 mm |
| Dimensions warming tray (W/D): | 295 x 235 mm |
| Temperature warming chamber: | +30° C to +70° C |
| Temperature warming tray: | +30° C to +75° C |
| Weight: | 15 kg |
| Power supply: | 115-230 V / 50/60 Hz / 750 VA |



Single Cool Units

TES 99.410/99.510

The largest cold plate with a powerful aggregate easily reaches a temperature of -15°C in very short time. Its working surface has space for 110 blocks.

Technical data:

| | |
|------------------------------|--|
| Total dimensions (W/D/H): | 500 x 570 x 300 mm |
| Dimensions cold plate (W/D): | 500 x 260 mm |
| Temperature: | $+15^{\circ}\text{C}$ to -15°C |
| Weight: | 25 kg |
| Power supply: | 115-230 V / 50/60 Hz / 320 VA |



TES 99.420/99.520

The compact model with small foot print for laboratories with limited table space. This cool unit has a capacity of up to 80 blocks that can be chilled at a temperature adjustable down to -10°C .

Technical data:

| | |
|------------------------------|--|
| Total dimensions (W/D/H): | 360 x 570 x 300 mm |
| Dimensions cold plate (W/D): | 360 x 260 mm |
| Temperature: | $+15^{\circ}\text{C}$ to -10°C |
| Weight: | 20 kg |
| Power supply: | 115-230 V / 50/60 Hz / 150 VA |

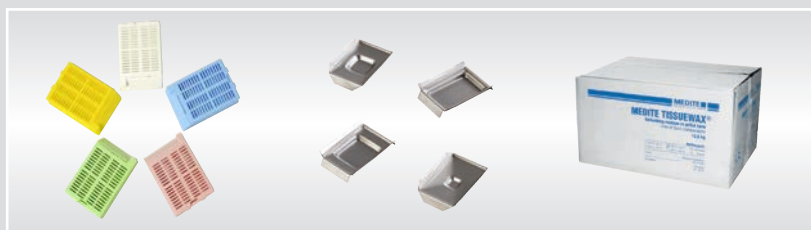


TES 99.430/99.530

This cool unit differs from the other models as it has a 20 mm deep cooling tray instead of a cold plate. For better temperature stability it is equipped with a tightly closing stainless steel cover. Up to 50 blocks can be chilled at a temperature adjustable down to -10°C .

Technical data:

| | |
|--------------------------------|--|
| Total dimensions (W/D/H): | 360 x 570 x 300 mm |
| Dimensions cooling tray (W/D): | 210 x 260 mm |
| Temperature: | $+15^{\circ}\text{C}$ to -10°C |
| Weight: | 20 kg |
| Power supply: | 115-230 V / 50/60 Hz / 150 VA |



Medite® offers a great variety of **embedding cassettes and molds** as well as "tissuewax®", our **embedding medium** in pellet form for application with all intermedia.

08-2009 / Subject to change without prior notice.

MEDITE
MEDITE GmbH
Wollenweberstr. 12
D-31303 Burgdorf / Germany
Tel. +49 52 51 35 100 0

Distributor: