



© 2013 Samsung Electronics All rights reserved.
Samsung Electronics reserves the right to modify the design, packaging,
specifications and features shown herein, without prior notice or obligation.
Ver.5 / March 2013

SAMSUNG SMART
DIGITAL RADIOGRAPHY

XGEO GC80

AN INNOVATIVE & CUTTING-EDGE
DIGITAL RADIOGRAPHY SYSTEM





SMART DIGITAL RADIOGRAPHY SYSTEM

XGEO ^{GC80}

The XGEO GC80 is the new flagship product from Samsung Electronics. It delivers high-quality DR performance along with a simplified workflow, to maximize user experience. The XGEO GC80 offers you the best diagnostic solution, while increasing your throughput and improving your workplace.



A BETTER DR EXPERIENCE

Robust FPD



Immediate Diagnostic Results



Smart Stitching



Adaptive Local Contrast Stretching (ALCOS)



Samsung XGEO GC80

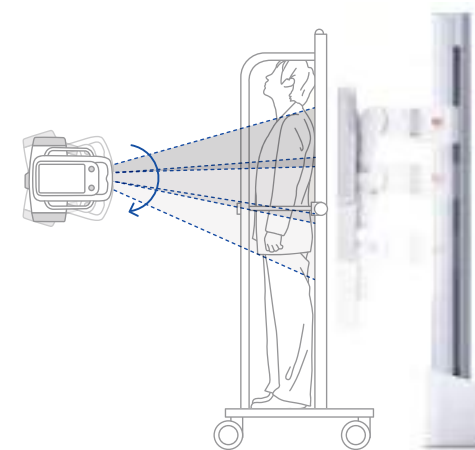
04

05

Premium imaging quality at high speed

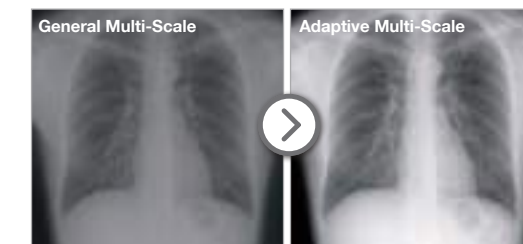
Immediate Diagnostic Results
Save time, and increase throughput and productivity.

Smart Stitching *
The X-ray tube and the detector move automatically when a full body image is being captured. It captures 2 or more images consecutively and then stitches the images into one. The Smart Stitching function can be operated using in two different methods; Tube Angle and Collimator Control.



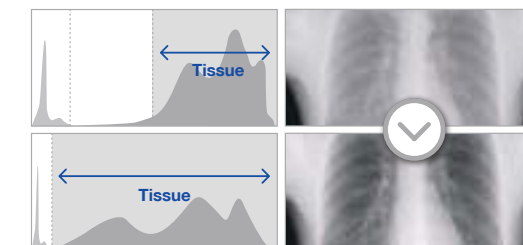
Adaptive Local Contrast Stretching (ALCOS)
The XGEO GC80 delivers high-resolution images using an automatic, customizable post image process Smart Dynamic Range (SDR) and Smart Contrast Enhancement (SCE) which automatically determine optimum image contrast and edge sharpness and effectively reduce noise.

01. Adaptive Multi-Scale Processing



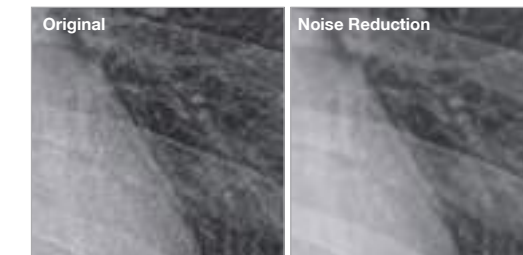
The multi frequency level can be flexibly controlled depending on the parts or tissues being imaged. A declining phenomenon of frequency decomposition at lower level can be prevented by the funnel structure. The image can be transformed through various structure groups based on partial characteristics.

02. Region-of-Interest Based Image Enhancement



The contrast and sharpness within detailed images of tissues can be enhanced and adjusted to the anatomical site being imaged. Histogram stretching allows users to simultaneously tune contrast and latitude to their preferred balance.

03. De-noising Filter



Selected noise can be eliminated by the noise filter and edge modeling without losing original data. The sharpness and resolution of bones and tissues can be maintained.

* Option

Our advanced technology promises you the best X-ray experience



Robust FPD

With its advanced technology and expertise in TFT design, Samsung's TFT-based flat panel detectors deliver maximized image quality, immediate results, and diverse applications. Samsung's compact and light detector improves work efficiency, user convenience, and patient safety.

36x43 cm Csl Wireless FPD



36x43 cm Csl Wireless FPD **



36x43 cm Csl Portable FPD



43x43 cm Csl Fixed FPD



** Available only in GC80

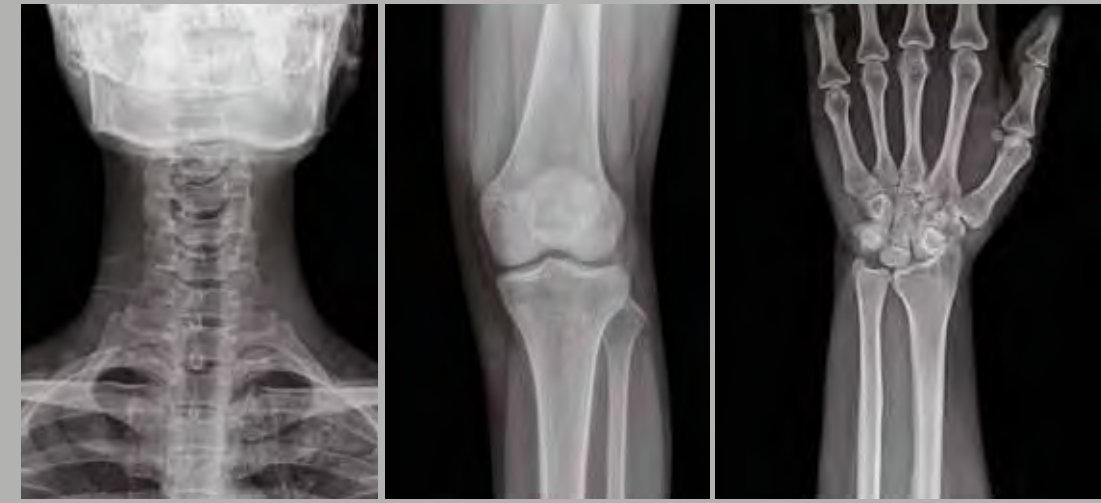


IMAGE GALLERY



A MORE ADVANCED DR EXPERIENCE

Flexible 6-way Table



Ergonomic THU (Tube Head Unit)



Intuitive GUI (Graphic User Interface)



Useful AUI (Audio User Interface)



Wireless Foot Switch



Soft Handling



XGEO GC80 guarantees satisfaction through rapid workflow and functional design

Flexible 6-way Table

The flexible 6-way table can endure heavy weight. Thin table legs make the best use of fixed space, and the outstanding traffic line will improve workflow.



Ergonomic THU (Tube Head Unit)

Handles, buttons, jog and touch screen are all in one layer. The THU integrates a 30.4 cm wide touch screen to increase user convenience and procedure optimization.



XGEO GC80

XGEO GC80V

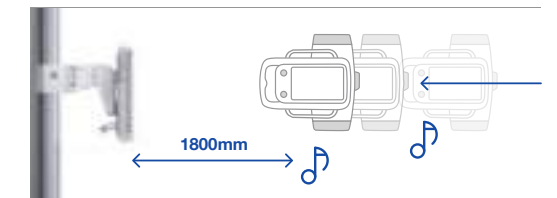
Intuitive GUI (Graphic User Interface)

A simple and intuitive GUI design maximizes user experience by applying a consistent UI design to both the THU and the workstation.



Useful AUI (Audio User Interface)

Different sounds and colors are assigned to each movement of the tube. Applying AUI to each movement helps users easily figure out the location of the THU while keeping patients under observation.



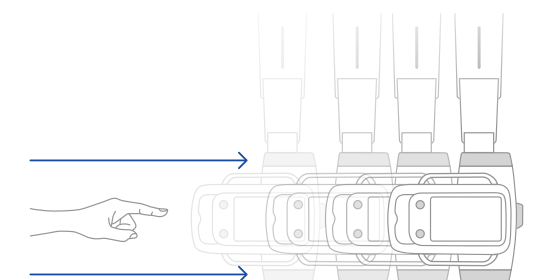
Wireless Foot Switch **

A foot switch equipped with wired/wireless (Zigbee) technology improves user convenience by enabling users to use it however they feel comfortable.



Soft Handling **

Users can easily operate the THU with its soft handling technology, even without a side-handle. Low-level noise and easy handling technology enable users to operate the THU with low physical pressure. In addition, the overall workflow shall be improved.



** Available only in GC80

A SAFER DR EXPERIENCE

Collision Avoidance System



Collimator with Separate Blade Control



DAP (Dose Area Product)



AEC (Auto Exposure Control)



Remote Control System



Safety is our primary concern

Collision Avoidance System **
6 collision avoidance sensors detect movement to help control operation.

Collimator with Separate Blade Control
Flexible and accurate function reduces radiation dose and improves functions.

DAP (Dose Area Product)
By measuring the amount of X-ray being used by the collimator, users can measure the dosimetry of patients being examined. DAP information can also be delivered to PACS and effectively managed.

AEC (Auto Exposure Control)
The AEC function prevents excessive exposure to X-rays and provides patients the best image quality possible.

** Available only in GC80

Samsung XGEO GC80

08

09



SMART AND EFFECTIVE DESIGN IMPROVES USER CONVENIENCE



Flexible FPD

The FPD function enables users to take images at any position without a table by enabling tilting angles at -20° ~ +90°.



Remote Control System for Optimal Working Conditions **

This provides comfortable imaging conditions for the user. The user can use the main remote controller to control all the functions. Specific positions for the tube, table, and stand can be set using three programmable keys.



For Main Use



For Stand

** Available only in GC80



Samsung XGEO GC80

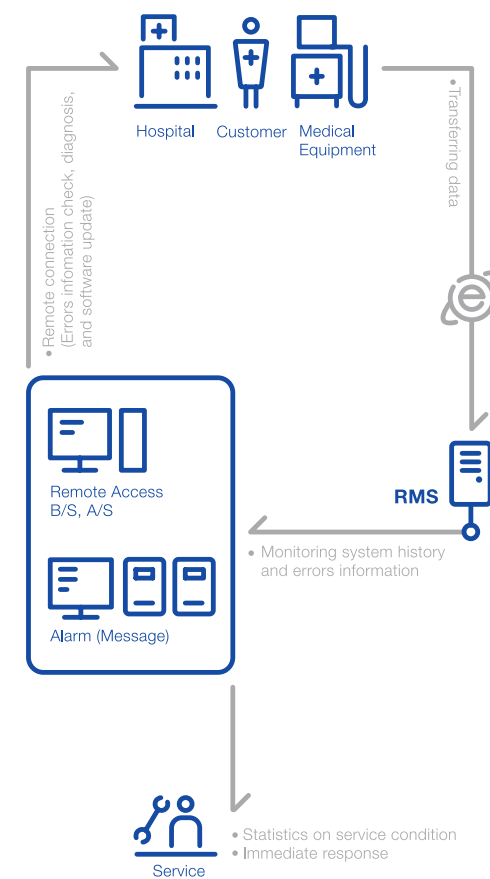
10

11

A PROACTIVE MONITORING SYSTEM

The remote management system analyses performance and emerging technical issues.

RMS (Remote Management System)

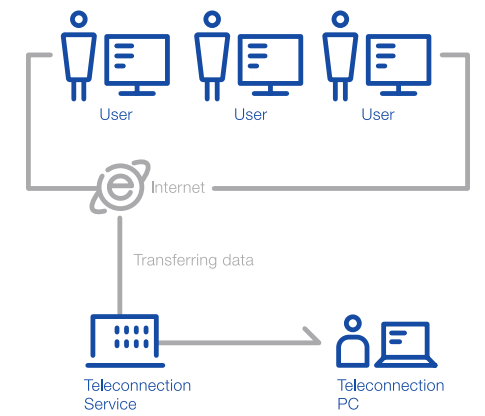


Remote Management System

This enables continuous monitoring of the system errors, auto-diagnosis of the system, and software version.

Remote Access

- Auto-diagnosis of the system and remote repair services are provided through remote access assistance.
- Real-time monitoring system respond immediately to problematic situations.
- Remote assistant services respond immediately when problems occur.
- Ping test checks whether the detector is connected normally.



GC80 series - GC80 / GC80V 65 / GC80V 80

	GC80	GC80V 65/80
Digital Detector	CsI	CsI
Tube	600kHU	400kHU
HVG (Generator)	80kW	65kW / 80kW
Soft Handling	O	X
Auto Positioning	O	X
Auto Stitching *	O	O
Auto Tracking	O	O

* Option