

OLYMPUS®



EVIS EXERA GASTROINTESTINAL VIDEOSCOPE
OLYMPUS GIF TYPE Q160Z

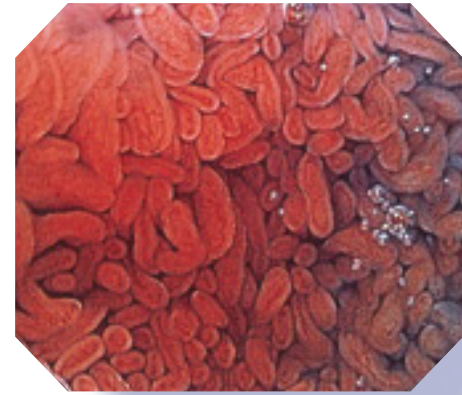
HIGH-QUALITY CLOSE-UP OBSERVATION

Experience the benefits of close-up observation
in the upper digestive tract with
high-quality imaging performance
all the way up to 115X*

* When images are displayed on a 20-inch monitor



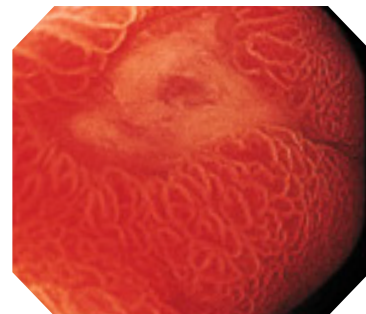
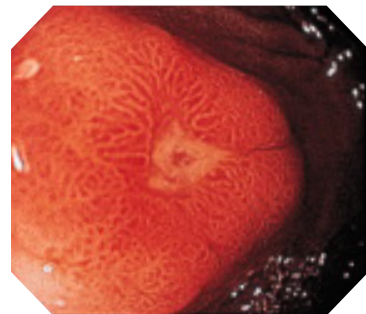
Close-up observation of the upper digestive tract with superior, high-resolution performance at up to 115X*



Powerful 115X* maximum magnification supported by high-resolution CCD

With the GIF-Q160Z, you'll be able to take advantage of today's finest zoom image quality. A high-resolution CCD and an improved optical system deliver uniformly bright, high-resolution images that are as sharp and clear at 115X* as they are at normal magnification. Since the advanced

optics prevent the annoying picture graininess you would experience with an electronically enhanced zoom, you'll be able to clearly examine structures of the mucous membrane in the upper digestive tract.



Ergonomically designed control section with convenient zoom lever

The control section of the GIF-Q160Z features an ergonomic design that enhances scope maneuverability and operation. User-selectable switches provide customizable convenience and a zoom lever lets you control zoom operation with your left hand alone.

Distal attachment maintains focus even at maximum magnification

The provided disposable distal attachment helps achieve correct depth of field even when the zoom magnification is set to maximum. This is especially important when the scope is used in areas where fluctuations in scope position are likely to occur due to the rapid movement of an adjacent organ.



D-201-12402
Distal Attachment
(provided)

Ergonomically designed control section allows zoom operation with the left hand alone



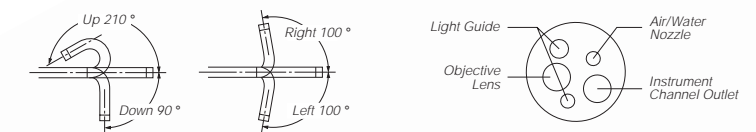
Main Features for Powerful Performance

- Powerful 115X* (max.) zoom magnification delivers detailed close-ups. Superior image quality with large display size provides enhanced details throughout the image plane.
- Slim 10.9 mm outer diameter insertion tube with a 2.8 mm channel diameter.
- Disposable distal attachment provided to ensure correct depth of field at all times.
- Extra-wide 140° field of view (in WIDE position) enables accurate observation of a wider area.
- 4-way angulation (210° up, 90° down and 100° right/left) enables comprehensive examination of the upper digestive tract.
- Ergonomically designed grip enhances scope maneuverability while redesigned easy-to-access knobs and user-selectable switches improve operability.
- Fully compatible with the CV-160/140.
- Scope ID function stores individual scope information and displays it on the monitor to facilitate endoscopy suite management.



Specifications

Optical System	Field of view	140° (in WIDE position)
		75° (in TELE position)
	Direction of view	0° Forward viewing
	Depth of field	8 to 100 mm (in WIDE position)
		1.5 to 3 mm (in TELE position)
Distal End	Outer diameter	10.8 mm
Insertion Tube	Outer diameter	10.9 mm
Bending Section	Angulation range	Up 210°, Down 90°, Right 100°, Left 100°
Working Length		1030 mm
Total Length		1340 mm
Instrument Channel	Inner diameter	2.8 mm
	Minimum visible distance	5 mm from the distal end (in WIDE position)
Endo-Therapy accessory entrance/exit position		field of view

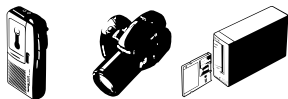


* When images are displayed on a 20-inch monitor

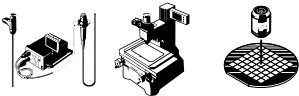
Olympus business areas



Medical and
health-care
area



Imaging and
information
area



Industrial
applications
area

OLYMPUS[®]
FOCUS ON LIFE

OLYMPUS OPTICAL CO., LTD.

2951 Ishikawa-cho, Hachioji-shi, Tokyo 192-8507, Japan

OLYMPUS OPTICAL CO. (EUROPA) GMBH.

Postfach 10 49 08, 20034 Hamburg / Wendenstrasse 14-18, 20097 Hamburg, Germany

OLYMPUS AMERICA INC.

2 Corporate Center Drive, Melville, N.Y. 11747-3157, U.S.A.

OLYMPUS KEYMED

Keymed House, Stock Road, Southend-on-Sea, Essex SS2 5QH, England

OLYMPUS SINGAPORE PTE LTD.

491B River Valley Road #12-01/04 Valley Point Office Tower, Singapore 248373

OLYMPUS HONG KONG AND CHINA LIMITED.

Room 1520-1527, Ocean Centre, 5 Canton Road, Tsimshatsui, Kowloon, Hong Kong

OLYMPUS BEIJING REPRESENTATIVE OFFICE

Rm. 818, South Tower, Beijing Kerry Centre, No.1 Guanghua Road, Chaoyang District, Beijing, 100020, China

OLYMPUS MOSCOW LIMITED LIABILITY COMPANY

117071, Moscow, Malaya Kaluzhskaya 19, bld. 1, fl. 2, Russia

OLYMPUS AUSTRALIA PTY. LTD.

1/104 Ferntree Gully Road, Oakleigh, VIC 3166, Australia

<http://www.olympus.com>

Printed in Japan F873SB-0301