

GE Healthcare

# LOGIQ P6

Powered by Voluson®





Volume Ultrasound, powered by Voluson, has advanced the world of ultrasound applications.

# Exceptional performance within reach.

Using GE's proven Voluson® technologies, healthcare practitioners can acquire, navigate, optimize and analyze volumetric images in RealTime - and then analyze raw volumetric data in a variety of planes after the exam.

The LOGIQ P6 comes from a strong heritage as a leader in ultrasound technology, delivering cutting-edge imaging quality.

The new LOGIQ P6, loaded with Voluson technologies, gives OB/GYN healthcare practitioners the dynamic, RealTime vision they've always dreamt of, in a package which is small enough to go almost anywhere yet strong enough to give you the exceptional imaging you need.

## Enhanced capabilities

In terms of performance and versatility, the new LOGIQ P6 powered by Voluson is a true heavyweight. The LOGIQ P6 houses premium capabilities in a small footprint, enabling you to meet the needs of patients across a range of clinical applications. It's light on its feet and can fit within the smallest exam spaces. Having the monitor on an articulating arm provides flexibility for viewing in all situations.

**Voluson technology provides volume rendering for all your OB/GYN applications:**

- **Optimized SRI** algorithms in 4D provide excellent surface rendering for an even more detailed view of the fetal anatomy.
- **Multiplanar imaging.** Volusons Volume Ultrasound boosts workflow efficiency - acquire a Volume dataset with a single sweep utilizing the best in class 4D probe technology, before analyzing it in detail. The result: Reduced Scan Time and remarkable visualization of anatomy.
- **C-plane imaging** provides a coronal view for analysis, that can not be visualized in 2D ultrasound, like the shape of the endometrium in gynecology, or the corpus colosum inside the fetal head.



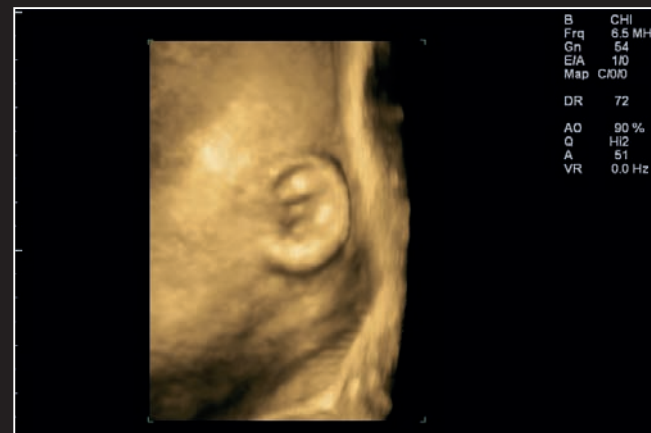
# Stunning image clarity with Volume Ultrasound



Hand and face of a 24 week fetus, perfectly visualized in 4D



4D rendering of fetal face



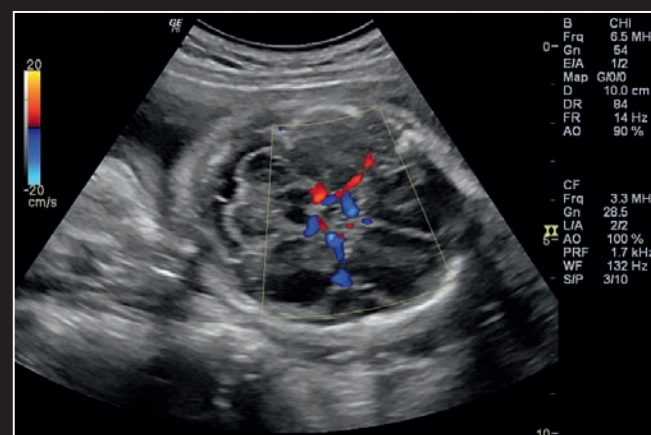
Detailed rendering of fetal ear, utilizing Volume SRI



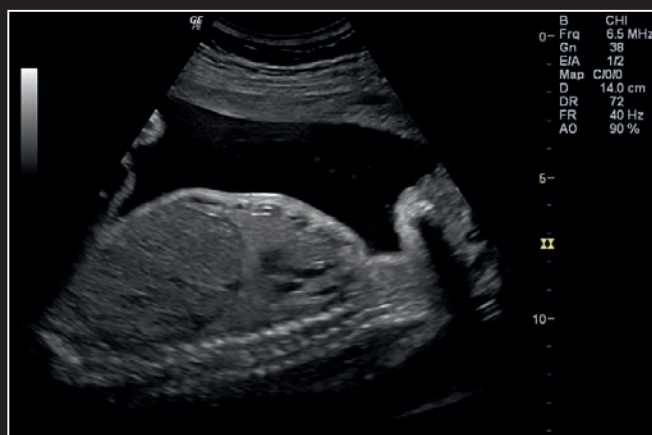
Perfect profile view



Fetal brain structures



Circle of Willis visualization with Color Doppler



Perfect Contrast Resolution allows clear differentiation of fetal organs



B-Flow color provides unsurpassed spatial resolution as demonstrated in fetal heart and aortic arch



Fetal heart, aortic arch visualized with Color Doppler without sacrificing frame rate



# See more.

The LOGIQ P6 incorporates innovative leadership technologies from GE Healthcare:

- A powerful Beamformer enables deeper penetration, higher resolution and better color flow sensitivity
- Speckle Reduction Imaging (SRI) heightens the visibility of organs and lesions with high-definition contrast resolution that suppresses speckle artefact while maintaining true tissue architecture
- CrossXBeam™ enhances tissue and border differentiation with RealTime spatial compounding acquisition and processing
- RealTime 4D Imaging acquires and constructs volumetric images and displays multiplanar views of the anatomy
- DualBeam enables high temporal resolution - essential for fetal heart assessment.
- B-Flow Color provides outstanding sensitivity and temporal resolution at high frame rates.

## Easy and fast workflow

- Start 4D
- Tile
- Orientation
- Freeze 4D
- Print, save



# Expect more.

The LOGIQ P6 powered by Voluson offers a complete portfolio of wide bandwidth, ergonomically-designed probes, to provide the highest levels of image quality. Given its ergonomic and lightweight design, the volumetric abdominal probe is also the primary choice for routine 2D examinations.

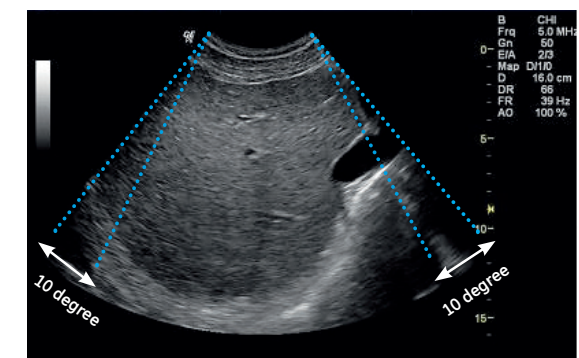
- Volume probes
- Convex probes
- Linear probes
- Specialty probes



# Do more.

Voluson technologies enhance LOGIQ P6 capabilities with:

- RealTime 4D
- Volusons proven track record for best in class RealTime 4D imaging
- Variety of Render Modes like surface mode, maximum mode for bones or minimum mode for fluid structures
- GE's unique Raw data capability allows image optimization on frozen and stored images
- Wide sector on convex probes
- Auto Focus control
- New intuitive 4D workflow



Wide sector mode increases the field of view.

The LOGIQ P6 powered by Voluson.

**A true performance heavyweight.**

©2009 General Electric Company - All rights reserved.

GE Medical Systems Ultrasound & Primary Care Diagnostics, LLC, a General Electric company, doing business as GE Healthcare.

General Electric Company reserves the right to make changes in specifications and features shown herein, or discontinue the product described at any time without notice or obligation. Contact your GE Representative for the most current information.

GE, GE Monogram, CrossXBeam, InSite, HD-Flow, LOGIQ and Voluson are trademarks of General Electric Company.

#### AMERICAS

GE Healthcare  
9900 Innovation Drive  
Wauwatosa, WI 53226  
U.S.A.  
T 1 888 202 5582

#### ASIA

GE Healthcare  
Clinical Systems ASIA  
1105-1108 Maxdo Center  
8 XingYi Road  
Shanghai 200336  
T 86 21 5257 4640  
F 86 21 5208 0582

#### UNITED KINGDOM

GE Medical Systems Ultrasound  
2, Napier Road  
Bedford MK41 0JW  
T 44 1234 340881  
F 44 1234 266261

## Healthcare Re-imagined

GE is dedicated to helping you transform healthcare delivery by driving critical breakthroughs in biology and technology. Our expertise in medical imaging and information technologies, medical diagnostics, patient monitoring systems, drug discovery, and biopharmaceutical manufacturing technologies is enabling healthcare professionals around the world to discover new ways to predict, diagnose and treat disease earlier. We call this model of care "Early Health." The goal: to help clinicians detect disease earlier, access more information and intervene earlier with more targeted treatments, so they can help their patients live their lives to the fullest. Re-think, Re-discover, Re-invent, Re-imagine.

GE Ultraschall Deutschland GmbH  
Beethovenstr. 239, D-42655 Solingen  
T 49 212-28 02-0, F 49 212-28 02 28

[www.gehealthcare.com](http://www.gehealthcare.com)



GE imagination at work