

## Specifications

Power supply	Voltage	100-120 V, 220-240 V AC		
	Voltage fluctuation	±10%		
	Frequency	50/60 Hz		
	Frequency fluctuation	±1Hz		
	Consumption electric power	300 VA		
Size	Dimensions	Main unit	370(W) x 185(H) x 480(D) mm	
		Main unit (Maximum)	430(W) x 185(H) x 500(D) mm	
		Keyboard	393(W) x 41(H) x 205(D) mm	
	Weight	Main unit	23.0 kg	
		Keyboard	2.7 kg	
Classification	Type of protection	Class I		
	Degree of protection against electric shock of applied part	TYPE BF applied part Where no classification mark appears, the device is a TYPE BF applied part.		
	Degree of protection against explosion	The ultrasound center should be kept away from flammable gases.		
Type BF applied part	This instrument can safely be applied to any part of the body except the heart.			
EMC compliance	IEC 60601-1-2:2001 CISPR11 GROUP1, Class B			
Ultrasound scanning format	Mechanical scanning, Electronic scanning			
Mechanical scanning	Display mode	B mode		
	Scanning	Radial scanning		
	Compatible equipment	Mechanical radial scanning ultrasound endoscope		
		Miniature probe		
	Usable frequencies	C5, C7.5, C12, C20, 7.5 MHz, 12 MHz, 20 MHz, 30 MHz		
	Display range	2, 3, 4, 6, 9, 12 cm		
	Display processing	Rotation (Radial)	Rotatable (64 steps, Clockwise/Counterclockwise)	
		Rotation (Radial at DPR/MPR)	Rotatable (512 steps, Clockwise/Counterclockwise)	
		Display area	Full circle, Bottom sector, Top sector, Scroll	
		Direction	Normal/Inverse	
	Cine memory	Maximum 160 frames		
		Cine review function		
	3D	Linear display, Oblique display, Surface display		
	Electronic scanning	Display mode	B mode, Color flow mode, Power flow mode	
		Scanning	Radial scanning, Curved linear array scanning	
Compatible equipment		Electronic radial scanning ultrasound endoscope		
		Electronic curved linear array scanning ultrasound endoscope		
Usable frequencies		5 MHz, 6 MHz, 7.5 MHz, 10 MHz, 12 MHz		
Display range		2, 3, 4, 5, 6, 9, 12 cm		
Display processing		Rotation	Rotatable (64 steps, Clockwise/Counterclockwise)	
		Display area (Radial)	Full circle, Bottom sector, Top sector, Scroll	
		Display area (Curved linear array)	Curved linear array	
		Direction	Normal/Inverse	
Cine memory		Maximum 160 frames		
		Cine review function		
Focus		Focus location adjustable Focus number adjustable		
Color/Power flow mode		Mode	Normal mode, High-resolution mode	
		Velocity range	±6.0 - ±20.0 cm/s	
3D	3D display	Provides online or real time 3D display by reconstructing multiple continuous 2D images acquired from 3D scanning.		
	MPR display	Displays radial display images, vertical linear display images, horizontal display images and 3D display images simultaneously during 3D examinations with the screen divided into four.		
Measurement	Distance Area/Circumference	Possible to measure distance between two points defined by the +, x, o or Δ symbols. Measure area/circumference enclosed by caliper tracing.		
Estimation	Volume	Available		
Video signal	SDTV output	VBS composite (Color, B/W), Y/C, RGB, YPbPr		
	HDTV output	RGB, YPbPr		
	DIGITAL output	IEEE1394		
Recording image data	Data format	Img format, Bmp format, Jpeg format		
	Storage device	Internal memory External storage device in conformity with USB		
Ancillary equipment	Keyboard	Keyboard with build-in trackball, LCD touch panel, and LED backlit keys		
	Photographic and recording units	Video printer (Color/Monochrome), VCR		
	Remote controllers	Foot switch, Mechanical radial scanning ultrasound endoscope remote switches		
	Video system center	Current image selection	The monitor display can be switched between endoscopic and ultrasound images.	
		Picture-in-picture	Displays the endoscopic image as a PinP subdisplay on the ultrasound image.	
	Patient data	Can share patient data with a video system center.		



EU-ME1



MAJ-1715 RS Adapter (option)

Specifications, design and accessories are subject to change without any notice or obligation on the part of the manufacturer.

# OLYMPUS®

Your Vision, Our Future

Mechanical Scanning



Electronic Scanning

UNIVERSAL ENDOSCOPIC ULTRASOUND CENTER

# EU-ME1

## OLYMPUS®

OLYMPUS MEDICAL SYSTEMS CORP.  
Shinjuku Monolith, 3-1 Nishi-Shinjuku 2-chome, Shinjuku-ku, Tokyo 163-0914, Japan  
OLYMPUS MEDICAL SYSTEMS EUROPA GMBH  
Postfach 10 49 08, 20034 Hamburg / Wendenstrasse 14-18, 20097 Hamburg, Germany  
OLYMPUS AMERICA INC.  
3800 Corporate Parkway, 120, Box 610, Center Valley, PA 18934-0610, U.S.A.  
OLYMPUS LATIN AMERICA INC.  
5301 Blue Lagoon Drive, Suite 290 Miami, Florida 33128-2097, U.S.A.  
OLYMPUS KEYMED GROUP LTD.  
Keymed House, Stock Road, Southend-on-Sea, Essex SS2 5QH, England  
OLYMPUS SINGAPORE PTE LTD.  
491B River Valley Road #12-01/04, Valley Point Office Tower, Singapore 248373

OLYMPUS HONG KONG AND CHINA LIMITED  
L43, Office Tower, Langham Place, 8 Argyle Street, Mongkok, Kowloon, Hong Kong  
OLYMPUS (BEIJING) SALES & SERVICE CO., LTD.  
Room 1202, NCI Tower, A12 Jianguomenwai Avenue Chaoyang District Beijing, 100022, China  
OLYMPUS MOSCOW LIMITED LIABILITY COMPANY  
117071, Moscow, Malaya Kaluzninskaya 19, Bld. 1, 12, Russia  
OLYMPUS AUSTRALIA PTY LTD  
31 Gilby Road, Mount Waverley, VIC, 3149, Australia  
OLYMPUS KOREA CO., LTD.  
4F, 5F, Gyeongnam Bldg., 157-27, Samsong-dong, Gangnam-ku, Seoul, Korea

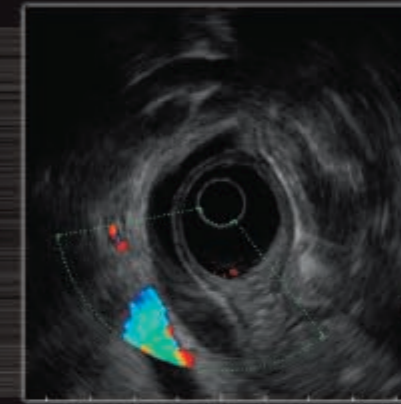
www.olympus.com

*Integrating both electronic and mechanical scanning technologies, the new EU-ME1 facilitates a wide range of endosonographic features and still provides the exceptional image quality you expect.*

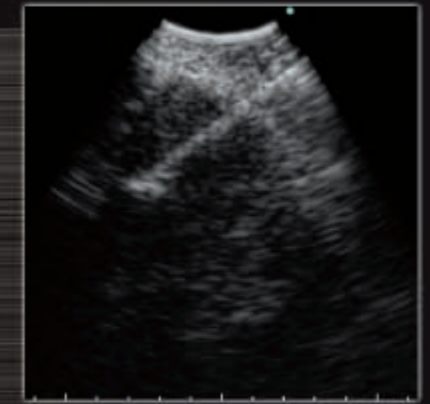
*The first and only endoscopic ultrasound center to integrate mechanical and electronic scanning capability is now available from Olympus. The EU-ME1 paves the way for an exciting era of advanced interventional endosonographic procedures, while continuing to support conventional procedures. The EU-ME1 is fully compatible with Olympus mechanical echoendoscopes, Aloka-compatible echoendoscopes, Olympus esophageal/rectal ultrasound probes, and ultrasound miniature probes. Designed and optimized specifically for Endoscopic Ultrasound (EUS) applications, this system offers greatly improved electronic scanning as well as the high-quality ultrasound images our customers have come to expect. With its compact, space-saving profile, user-friendly design with touch-panel keyboard, and wide range of convenient and practical functions, the EU-ME1 is the total endosonography solution.*



**EUS-FNA**



**Color Doppler**



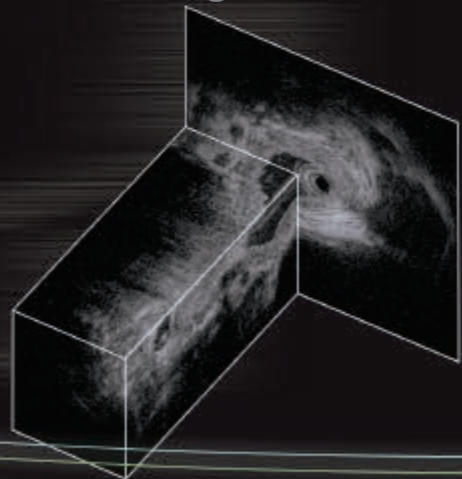
**EBUS-TBNA**



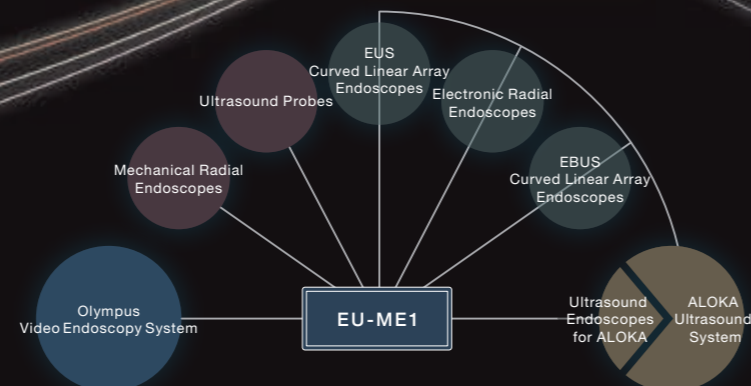
**Broadband scanning**



**IDUS**



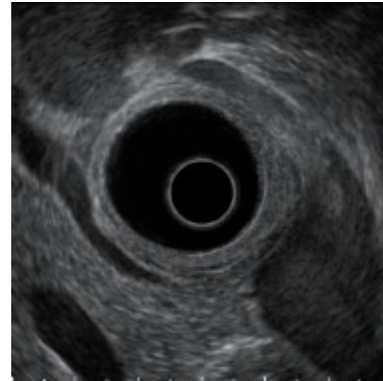
**3D Image**



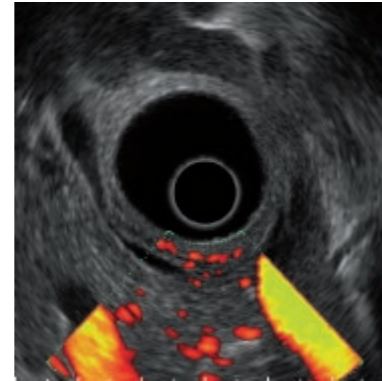
*State-of-the-art electronic scanning can be used to support imaging, EUS-guided FNA, and interventional procedures, providing high-quality imaging capabilities and Doppler functionality.*

**ELECTRONIC RADIAL SCANNING ENDOSCOPE**

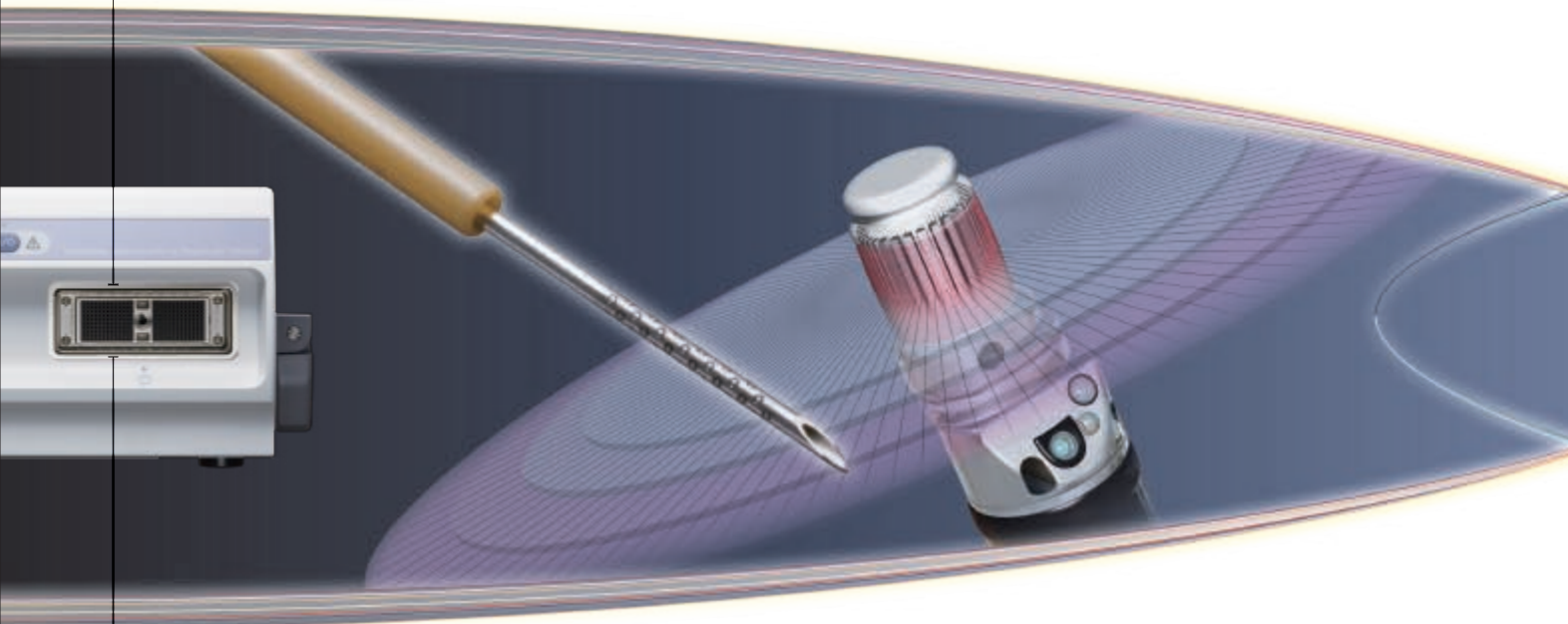
Designed to accommodate the world's first 360° electronic radial scanning ultrasound endoscopes, the EU-ME1 paves the way for state-of-the-art endoscopic ultrasonography with the color/power flow that incorporates a high-resolution mode to more readily identify vascular structures.



B-mode



Power flow mode



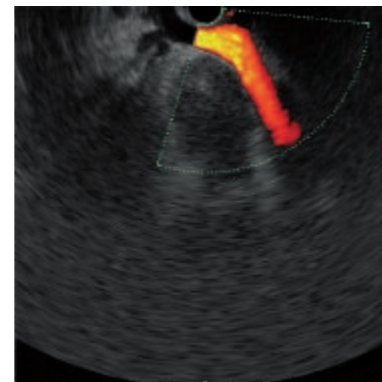
**CURVED LINEAR ARRAY SCANNING ENDOSCOPE**

The EU-ME1's curved linear array scanning guides FNA procedures with greatly improved ultrasound image and Doppler functions.

When an Olympus curved linear array scanning endoscope is connected to the EU-ME1, you can perform interventional procedures and EUS-guided FNA, to accurately acquire specimens from targeted lesions.



B-mode

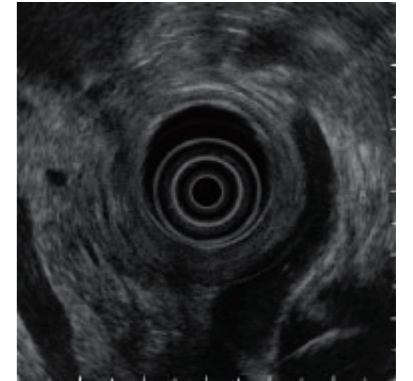


Power flow mode

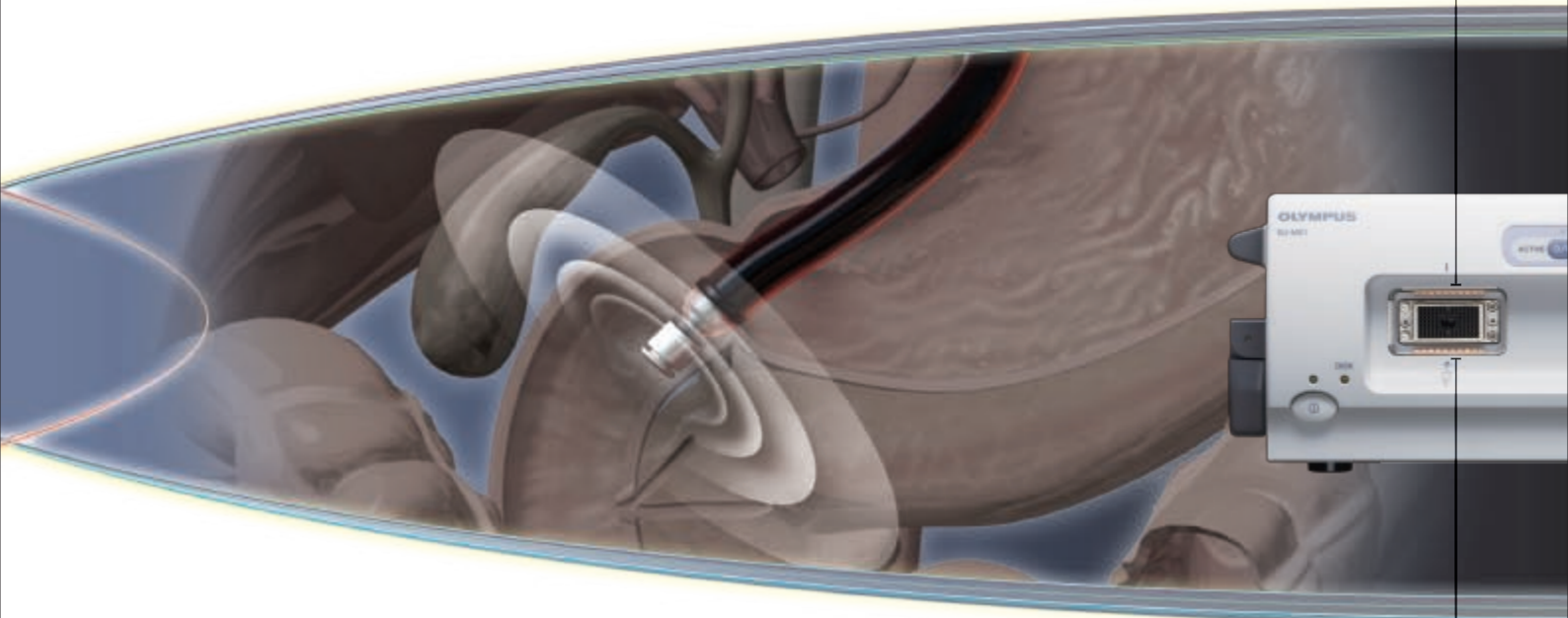
*Incorporating technology unique to Olympus, the broadband echoendoscope and wide range of ultrasound probes offer EUS capabilities to support a variety of imaging procedures.*

**MECHANICAL RADIAL SCANNING ULTRASOUND ENDOSCOPES**

With the versatile EU-ME1, you can also take advantage of Olympus' mechanical radial scanning technology, which uses a HyperBand transducer. True broadband scanning is provided using four different center frequencies to obtain high-resolution ultrasound images with deeper penetration. Depending on the frequency you choose, you can image deeper into the body or focus on the finer details of more superficial areas.

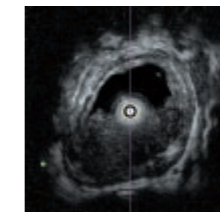


B-mode

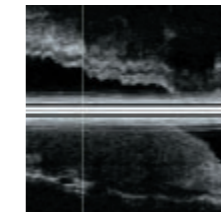


**MECHANICAL RADIAL SCANNING ULTRASOUND PROBES**

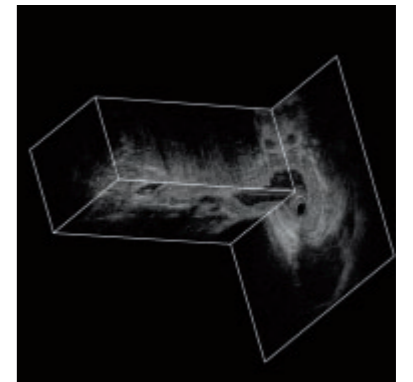
Olympus' originality doesn't stop at mechanical scanning echoendoscopes. We also offer a wide range of mechanical radial scanning miniature probes that can be passed down the channel of a standard endoscope to provide high quality ultrasound images within and beyond the gut wall, common bile duct, and pancreatic duct. Available with various frequencies, outer diameters, and applications, Olympus' wide range of ultrasound probes will meet your individual examination needs.



Radial image



Linear image



3D image

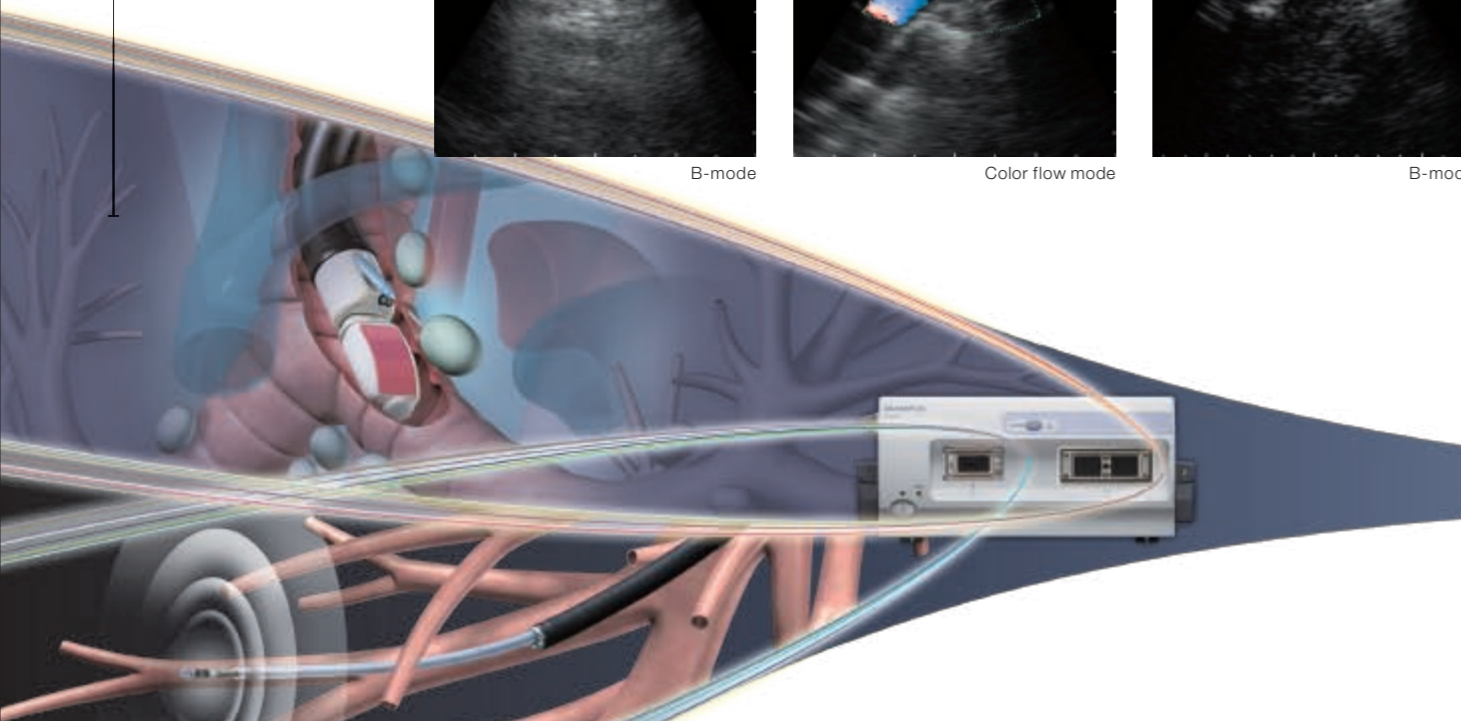
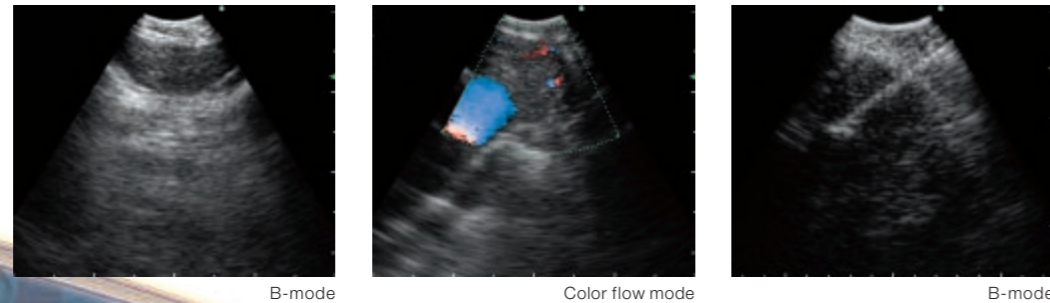
**With EU-ME1, Olympus also provides a comprehensive endobronchial ultrasound system ideal for the staging and diagnosis of suspected lung cancer.**

**ENDOBONCHIAL ULTRASOUND-GUIDED TRANSBRONCHAL NEEDLE ASPIRATION**

[CURVED LINEAR ARRAY SCANNING ENDOSCOPE]

Real time endobronchial ultrasound-guided transbronchial needle aspiration (EBUS-guided TBNA) is one of today's most exciting new minimally invasive techniques used for obtaining accurate specimens in patients with mediastinal lymph nodes suspected of malignancy.

EBUS-TBNA enables you to puncture the target lesion while confirming needle tip location under ultrasound guidance, significantly improving accuracy. The leading experts are predicting that it will become the first choice of biopsy, performed before mediastinoscopy, for lung cancer staging.

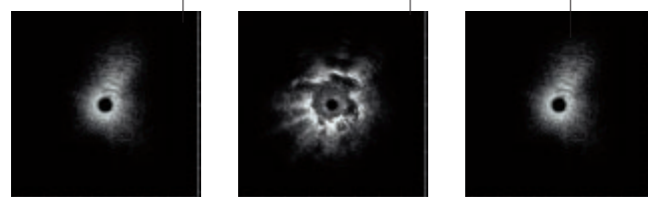
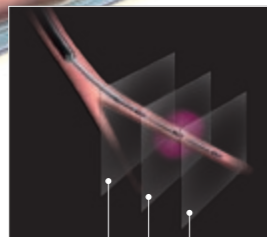


**ENDOBONCHIAL ULTRASOUND GUIDE-SHEATH BIOPSY**

[MINIATURE PROBES]

The EBUS Guide Sheath is another new technique for obtaining specimens in suspected peripheral lung cancer. By placing the guide sheath near the target lesion, previously delineated by the radial scanning miniature probe, you can perform biopsy or brush cytology repeatedly and easily. Advancing the sampling device through the sheath after the miniature probe has been withdrawn improves accuracy, and shortens examination time.

Move the ultrasound probe within the guide sheath, back and forth, observing the ultrasound image to assess the lesion.



**A compact, user-friendly design and extensive connectivity allow for simple system integration for basic and advanced EUS procedures performed in the same room.**

**Compact platform and EVIS-ready design that can be placed on a standard endoscopy cart**

The EU-ME1 is designed to save space in your endoscopy suite. For all its advanced capabilities and versatile functions, the EU-ME1 boasts a slim, compact profile that fits easily on the shelf of an endoscopy cart and leaves plenty of room for all the other equipment you need. The picture-in-picture function allows for both endoscopy image and ultrasound image to be displayed on a single monitor.

**Sophisticated keyboard with touch panel, trackball, and LED backlit keys**

The EU-ME1 also features a newly designed keyboard that includes a touch panel, with fewer and better-positioned keys, a trackball, and LED backlit keys. This allows for more user-friendly operation and seamless integration with the Olympus EVIS endoscopy system.



**A wide range of interfaces ensures expandability in the future**

**USB output**

A built-in USB interface can connect to a wide variety of modern digital devices.

**HDTV output**

When used with the OEV191H monitor, the EU-ME1 can display both the endoscopic and ultrasound images via an HDTV signal using the picture-in-picture function.

**IEEE1394 output**

An IEEE1394 interface, for high-speed communications and isochronous real-time data transfer, can be connected to advanced digital storage devices.

**RS Adapter (MAJ-1715)**

An RS adapter (MAJ-1715) can be connected to echoendoscopes or probe driving units that have a round connector, ensuring backward compatibility.

